



Shelby County EMA-IT Building Project

ADDENDUM NO. 4

Date: November 21, 2025

RE: Shelby County EMA-IT Building Project Bid

BID DATE AND TIME:

CHANGED to Tuesday, December 9, 2025 at 2:00 p.m. CST

Location for the bid opening remains the Shelby County Manager's Office, located at 200 West College Street, Room 123, Columbiana, Alabama, 35051

Project Manual, Plans and Specifications:

- See attached revised Section 01-1100 – Summary of Work
- See attached revised Sheet A5 – Exterior Wall Materials Designations
- See revised Sheet A6 – Building Sections Floor Slab and Foundations (to match structural drawings)
- See attached revised Sheet A12 – Wall Section - Insulation Batts
- See attached revised Sheet A15 – Interior Finish Designations
- See attached revised Sheet A18 – Cabinetry Finish Designations and Additional Details
- See attached revised Sheet A20 – Drainage Fill and Vapor Barrier

Substitution Request:

- 07-5419 PVC Roofing – Elevate / Firestone PVC MAX 60 mil by Elevate – APPROVED

Questions and Clarifications:

Q1 - Please provide clarification for the type of batt insulation required at the exterior wall framing. The specifications list foil faced, unfaced, as well as white vinyl faced.

A1 – Foil faced batt insulation at exterior wall framing. It is a better radiant heat barrier. All wall insulation covered with gypsum board, no exposed insulation.

Q2 – Will the contractor provide the cameras or the County.

A2 - Contractor to provide data drops and boxes at camera locations, for pole cameras single mode fiber is to be used and terminated at the same location as the power provided for the camera media converters. Owner to furnish and install all cameras, mounts, and media converters. (See Spec 01 1100 (1.7A(4)) The County will also furnish and install all monitors and projectors after the building is substantially complete.

Q3 - Please advise if access controls (28-1300) is by owner or GC-responsibility. There is a spec section dedicated for this item, but specification 01-1100 – section 1.3-A-g seems to exclude it. Please advise which is correct.

A3. Yes, the contractor is responsible for installing the access control

Q4 - Tiling spec section 09-3000 section 3.2-F: Please provide further details or specifications for the referenced trim – type/manufacturer/finish.

A4 - • See attached revised Sheet A15 – Interior Finish Designations

End of Addendum

PART 1 GENERAL

1.1 SUMMARY

- A. Section Includes:
 - 1. Project description.
 - 2. Work by Others.
 - 3. Work sequence.
 - 4. Owner occupancy.
 - 5. Future work.
 - 6. Contractor's use of site and premises.
 - 7. Owner furnished Products.

1.2 PROJECT DESCRIPTION

- A. The use of the building will be the Shelby County Emergency Operations Center, Emergency Management Offices, and Information Technology Offices.
- B. Work of this Project is described as the complete construction of a one-story, 15,616 square feet area, Type II Non-Combustible Building, which includes an ICC 500 Risk Category IV compliant Emergency Operations Center.
- C. The building is constructed in 3 sections. A poured-in-place concrete wall and roof structure to house the Emergency Operations Center, and 2 structural steel frame with steel joist buildings for office areas. All 3 are built as a single attached structure.
- D. The building is clad with steel insulated wall panels and burnished concrete masonry wainscot at perimeter. The building has a rigid insulation and membrane roof system over metal deck at framed section and over concrete roof at Emergency Operations Center.
- E. Work includes a protected Mechanical Court for essential HVAC and Electrical equipment
- F. The Project will be constructed under a single construction contract.
- G. Work includes Building Construction, Site Construction, Plumbing, HVAC, Power, Lighting, Electronic Access Control, and Data.
- H. Work includes infrastructure for security cameras and equipment, radio and communications systems, audio-video systems.
- I. Work includes a 1-hour fire rated Server Room for IT operations.
- J. Work includes an NFPA 13 compliant sprinkler system.
- K. Work includes a Fire Alarm and Notification system.
- L. Work includes an Emergency Generator designed to power all operations.
- M. Work includes complete electronic access door control system compatible with county's existing Avigilon installation.
- N. Work includes soil fill, Rough and Finish Grading, Landscaping and Irrigation.

- O. Work includes exterior dimensional wall signage. (Street #)
- P. Work includes asphalt and concrete pavement, sidewalks, structures, curbs and gutters.
- Q. Work includes localized silt fencing, haybales, wattle, etc. at building excavation pad to comply with city and county BMP requirements.
- R. Project has Tax Exemption Status.

1.3 WORK BY OTHERS

A. Separate Contracts:

1. The Owner has or will execute contracts for additional work at the site that is excluded from the work of this Contract, and that includes:
 - a. Property Boundary Survey
 - b. Property Topographic map
 - c. Soil Compaction Testing and Borings
 - d. Special Inspections
 - e. Radio and Communication Systems.
 - f. Camera Systems.
 - g. Audio / Video Systems.
 - h. See ELECTRICAL for GC-installed cabling and conduit to power these items.
2. Work under separate contracts may be executed concurrently with Work of this Contract.
3. Cooperate with the Owner and separate contractors to accommodate Owner's work.

1.4 WORK SEQUENCE

- A. Construct Work in one single phase.
- B. Coordinate construction schedule and operations with the Owner.
- C. Schedule the Work to accommodate Owner's requirements.

1.5 FUTURE WORK

- A. Ensure that work of this Contract does not encroach on areas of future work.

1.6 CONTRACTOR'S USE OF SITE AND PREMISES

- A. Contractor shall have complete and exclusive use of site and premises for execution of the Work.
- B. Contractor shall assume full responsibility for protection and safekeeping of products under this Contract stored on site.

SECTION 01-1100 – Page 3 of 4

- C. Contractor shall obtain and pay for use of any additional storage or work areas needed for operations.
- D. Contractor shall coordinate use of site and premises with the Owner:
 - 1. Employee parking: In designated areas.
 - 2. Access to site and premises: In designated areas.
 - 3. Storage and staging areas: In designated areas.
 - 4. Transport materials and equipment to and from construction area along routes approved by local jurisdiction
- E. Confine operations to construction area unless otherwise approved by Owner.
- F. Do not use or store hazardous or flammable materials on premises without Owner's and local Fire Authorities approval; follow requirements of governing authorities having jurisdiction over the work.
- G. Prohibit smoking within interior spaces.

1.7 OWNER FURNISHED PRODUCTS

- A. Products that will be furnished and paid for by Owner are as follows:
 - 1. Certain Residential Kitchen Appliances to be Furnished and Installed by Owner. See Section 11 3100 for list and exceptions.
 - 2. Paper Towel Holders and Toilet Tissue Roll Holders in toilet rooms to be Furnished by Owner and Installed by Contractor. See Section 10 2813.
 - 3. Projector screens and wall mounted monitors Furnished and Installed by Owner.
 - 4. Cameras Furnished and Installed by Owner
- B. Contractor's Responsibilities to include but not be limited to:
 - 1. Designate delivery date for each product in Progress Schedule.
 - 2. Review Shop Drawings, Product Data and Samples. Submit to Architect with notification of any discrepancies or problems anticipated in use of product.
 - 3. Receive and unload products at site.
 - 4. Promptly inspect products jointly with Owner; record shortages, damage, and defective items.
 - 5. Handle products at site, including uncrating and storage.
 - 6. Protect products from exposure to elements and from damage.
 - 7. Assemble, install, connect, adjust, and finish products, as stipulated in respective specification section.
 - 8. Repair or replace any items damaged by Contractor's forces.

PART 2 PRODUCTS

Not used

PART 3 EXECUTION

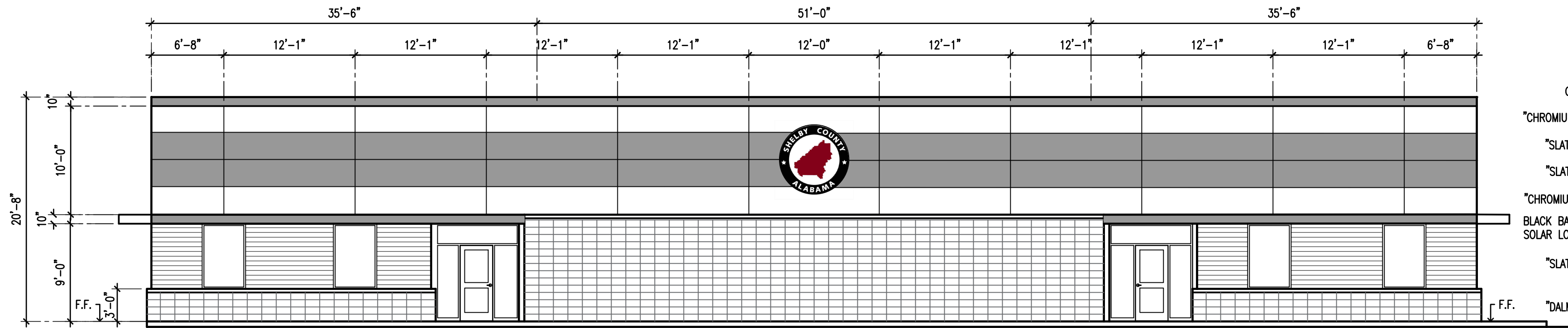
Not used

END OF SECTION

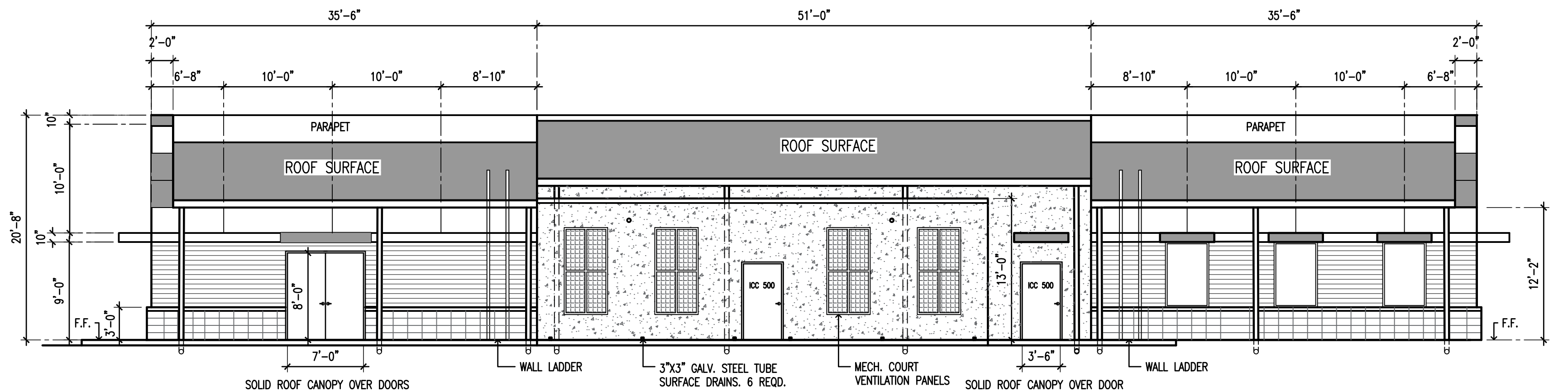
C:\Users\steve\OneDrive\Desktop\CURRENT PROJECTS\SHELBY COUNTY EMA-IT\SHELBY COUNTY EMA-IT REVERSED PLAN.dwg, 11/20/2025 6:48:58 PM



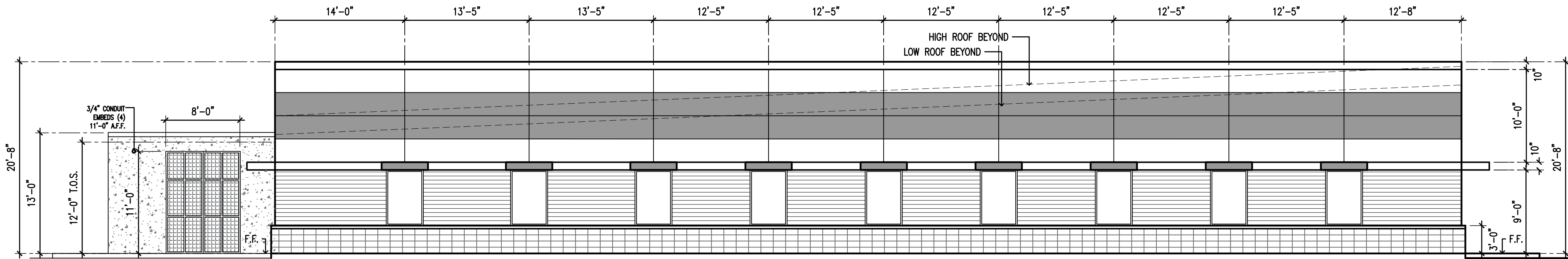
SHELBY COUNTY BADGE SIGN FURNISHED BY OWNER,
INSTALLED BY CONTRACTOR. CONFIRM INSTALLATION
METHOD AND PROCEDURE FROM SIGN MANUFACTURER.



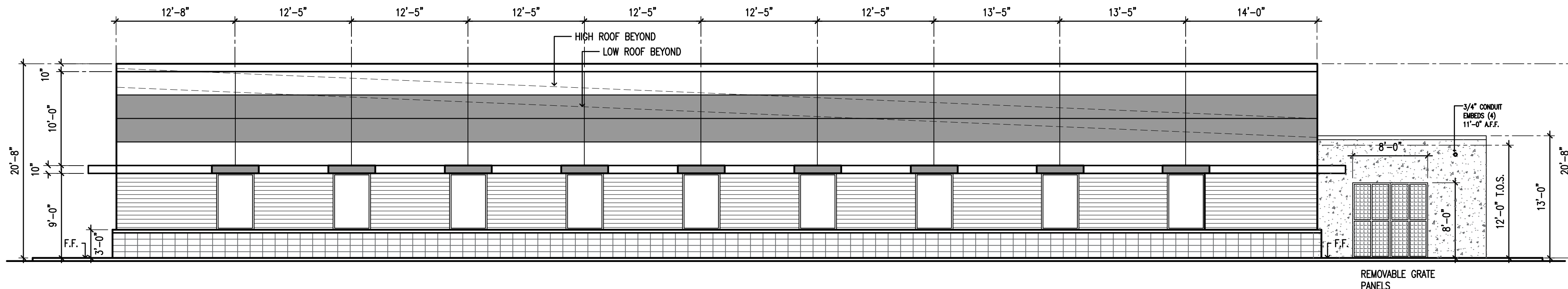
FRONT (WEST) ELEVATION



REAR (EAST) ELEVATION

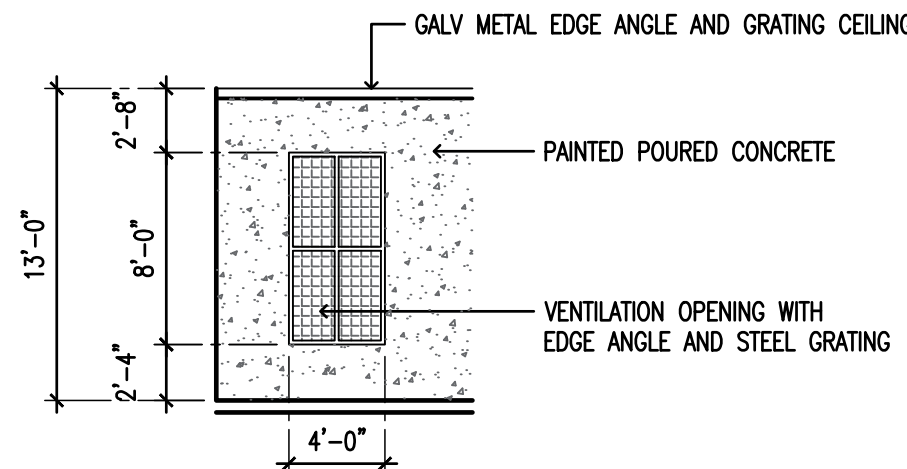
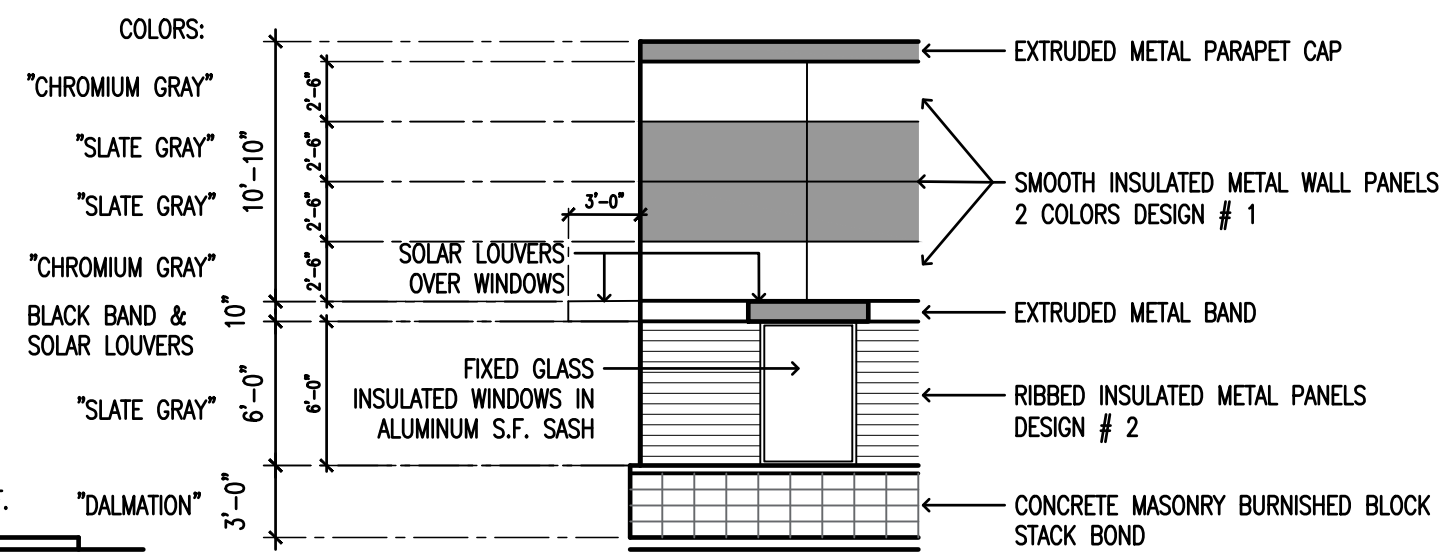


SIDE (NORTH) ELEVATION



SIDE (SOUTH) ELEVATION

COLOR DESIGNATIONS ON METAL PANELS.
TYPE DESIGNATIONS ON METAL PANELS.



WALL MATERIALS DESIGNATIONS

METAL WALL PANEL DESIGN # 1:

HORIZONTAL INSULATED
CENTRIA FWDS WALL PANELS, SMOOTH FINISH.
2" THICK 30" WIDE. 22 GA.
2 PANEL COLORS: 971 "CHROMIUM GRAY"
181 "SLATE GRAY"

METAL WALL PANEL DESIGN # 2:

HORIZONTAL INSULATED
CENTRIA DS 60 WALL PANELS, SMOOTH FINISH
2" THICK, 24" OR 36" WIDE. 22 GA.
1 PANEL COLOR: 181 "SLATE GRAY"

PARAPET CAP, 10" HORIZONTAL BAND, &
SUN LOUVERS - BLACK COLOR ALL TO MATCH.

PARAPET BACKSIDE METAL PANELS:
CENTRIA NON-INSULATED 1W-14A
COLOR: 181 "SLATE GRAY"

CENTRIA METALS, EXCEPTIONAL METALS, AND
METL-SPAN BRANDED PRODUCTS ARE ALL
ACCEPTABLE.

CONCRETE MASONRY WAINSCOT:

NETTLETON CONCRETE BURNISHED FACE
"DALMATION"

MORTAR: COOSA "GRAY"

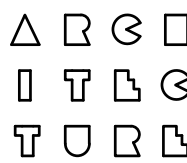
REVISIONS	BY
11-21-2025	SJC

DRAWINGS COPYRIGHT © 2025
ALL RIGHTS RESERVED
Stephen Coker Architect LLC



Not Valid for Construction
without Registration Seal

Shelby County
EMA - IT FACILITY
260 - McDow Road
Shelby County, Alabama 35051



Stephen
Coker
Architect
LLC

1000 Glen View Road
Birmingham, Alabama 35222

Phone 205/595-0021

E-mail:
steve@cokerarch.com

DRAWING DATE	10-27-2025
DRAWN BY	SJC
PROJECT NO.	250407

EXTERIOR ELEVATIONS

SHEET NO.

A5

10 OF 25(A) SHEETS

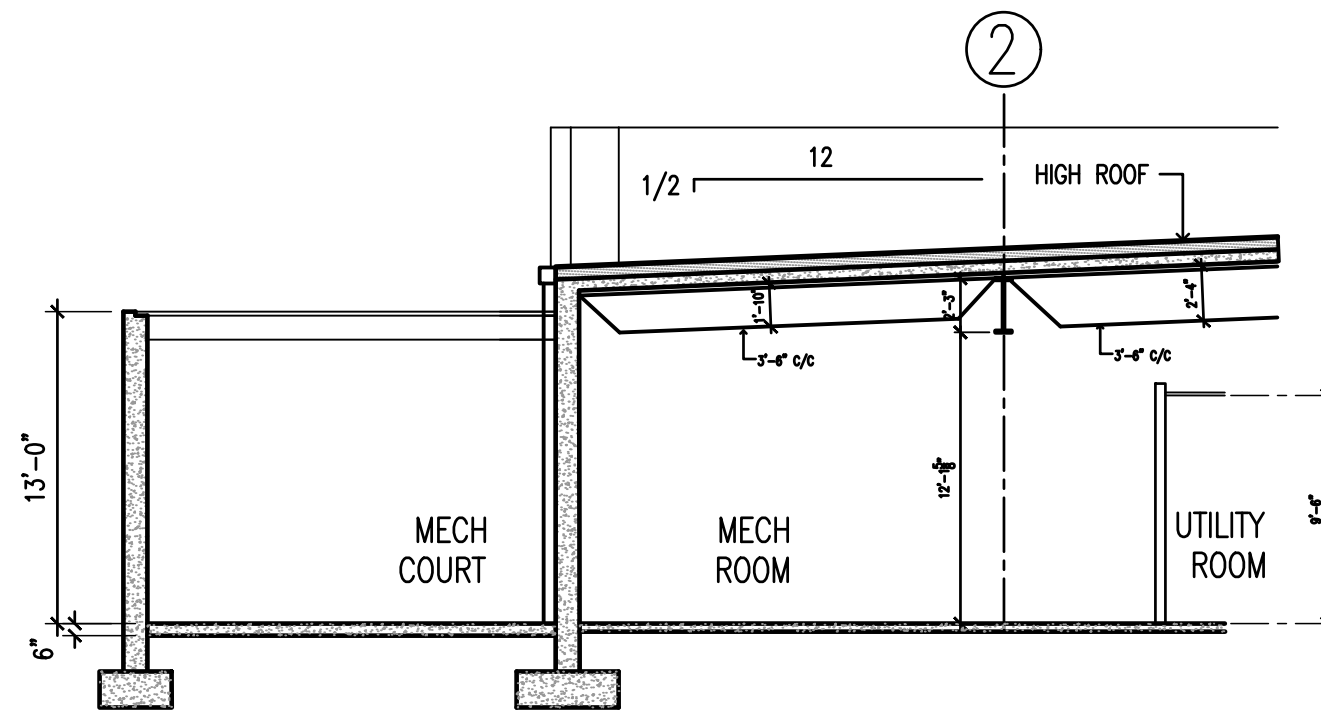
EXTERIOR ELEVATIONS
scale: 1/8" = 1'-0"
scale is accurate on 24"x36" sheets only

C:\Users\steve\OneDrive\Desktop\CURRENT PROJECTS\SHELBY COUNTY EMA-IT\SHELBY COUNTY EMA-IT REVERSED PLAN.dwg, 11/20/2025 6:49:05 PM

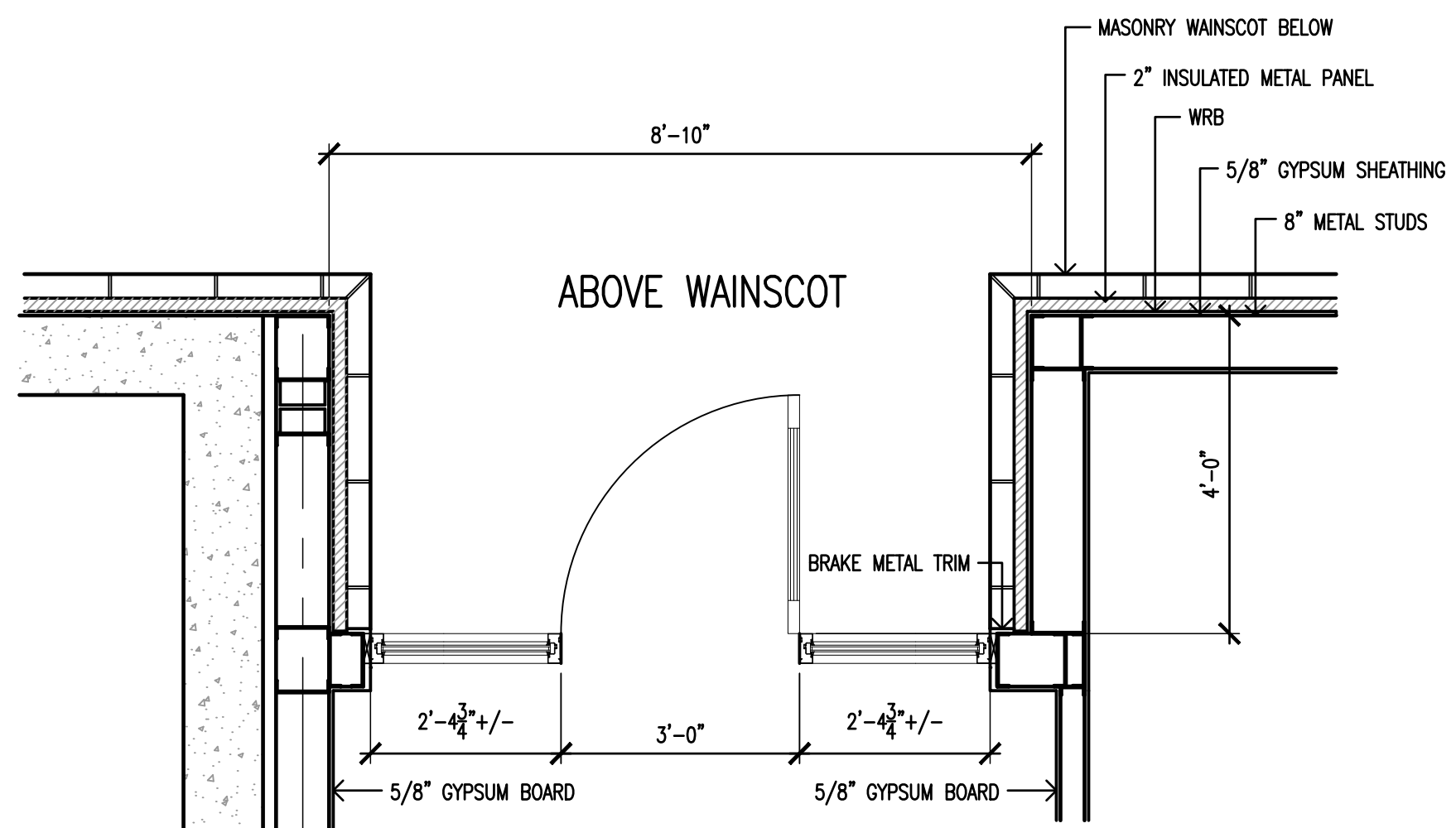
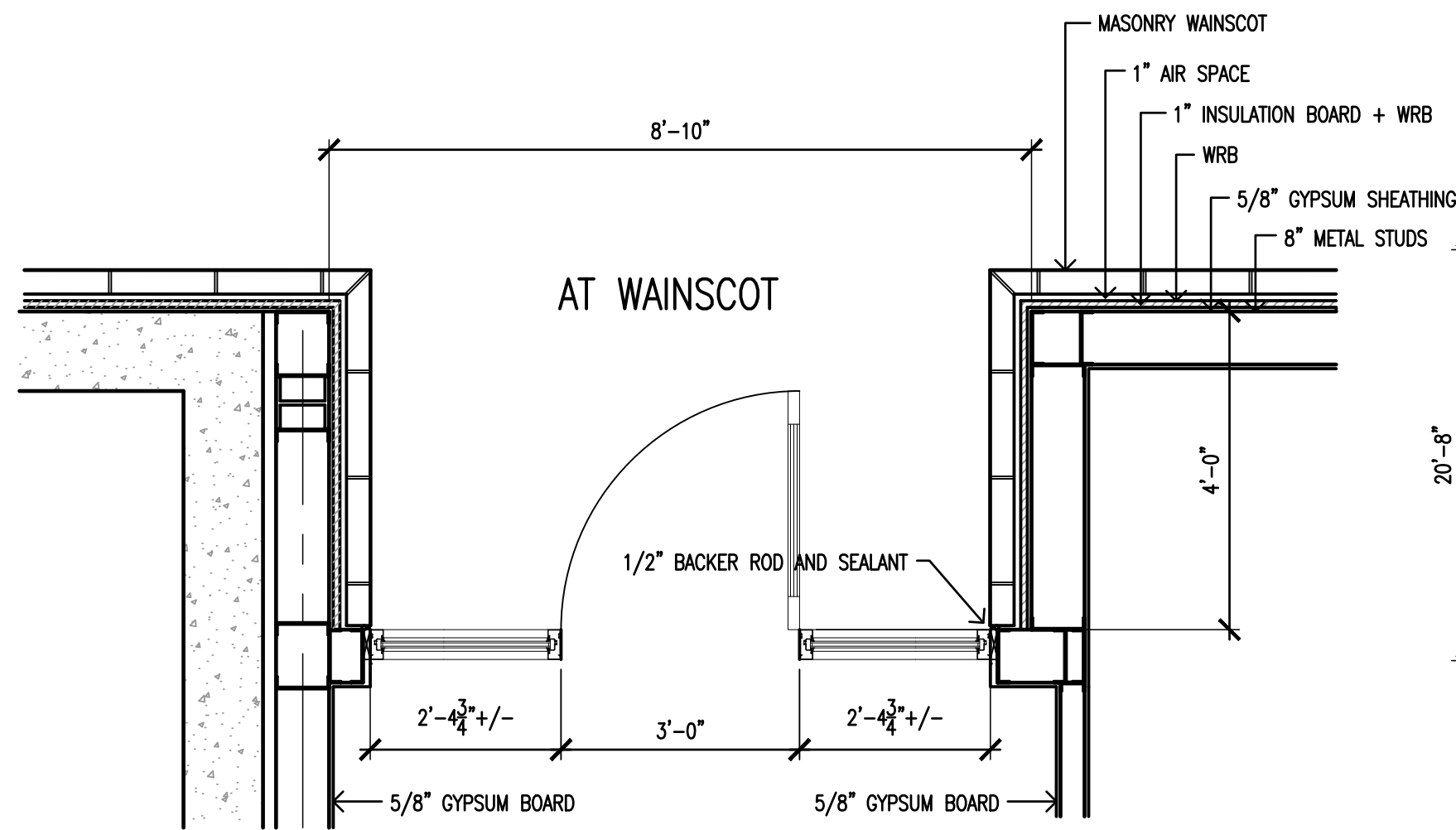
4" CONC. FLOOR SLAB OVER
10 MIL. POLY VAPOR BARRIER
ON 4" MINIMUM #57 OR #67
GRAVEL DRAINAGE FULL

EQUIPMENT COURT: 6" CONC. SLAB

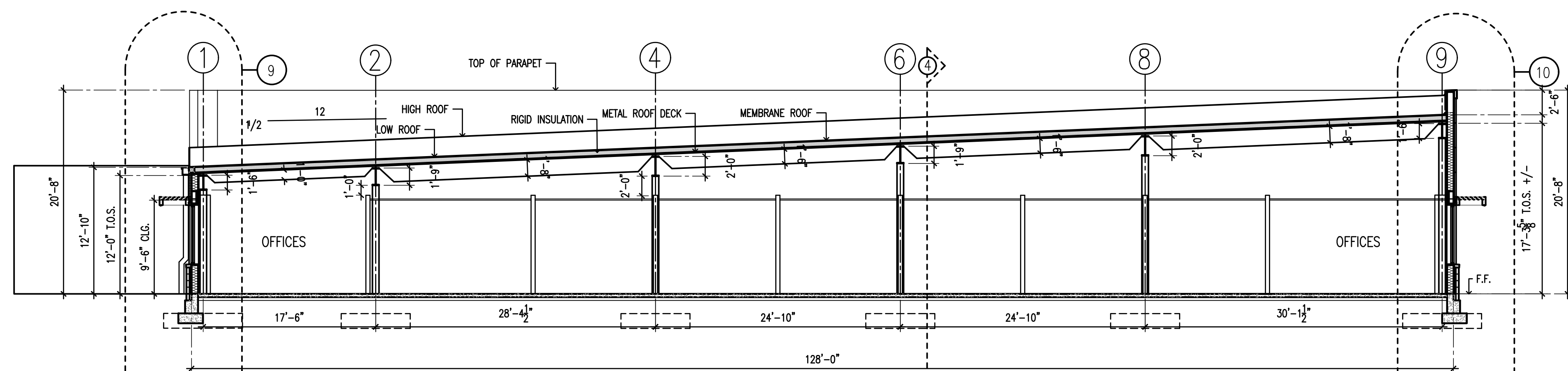
SEE STRUCTURAL DRAWINGS FOR REINFORCING
AND CONTROL JOINT LOCATIONS



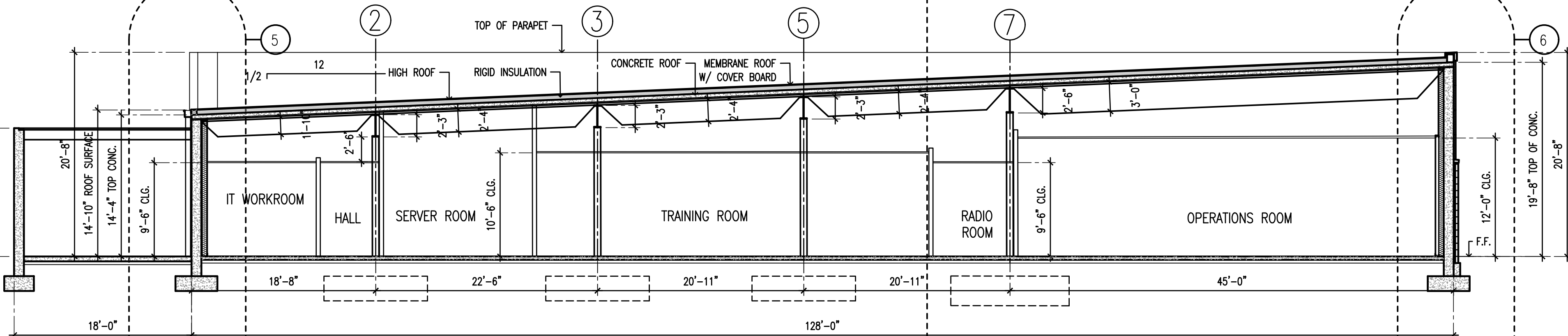
SECTION AT MECH ELEC ROOMS



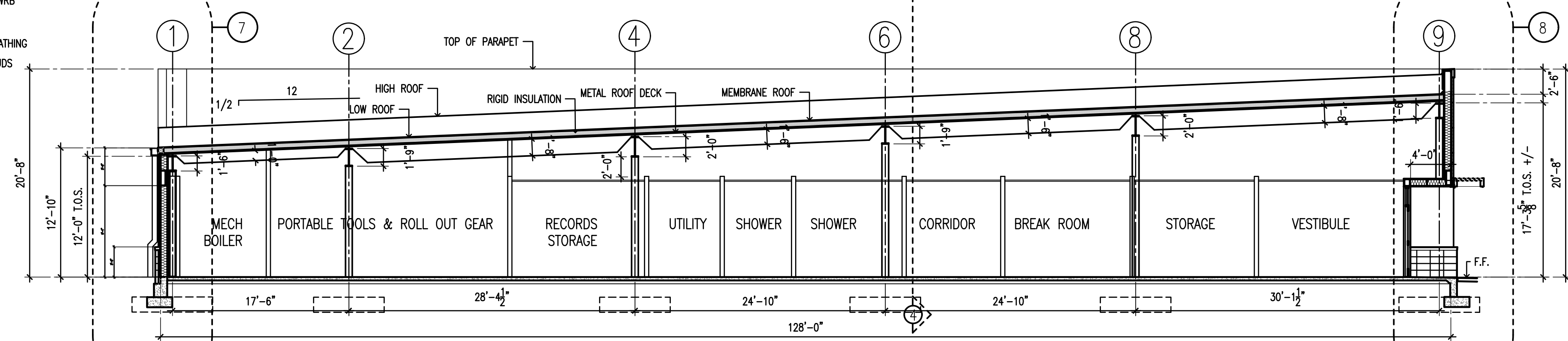
A ENTRY PLANS
scale: 1/2" = 1'-0"



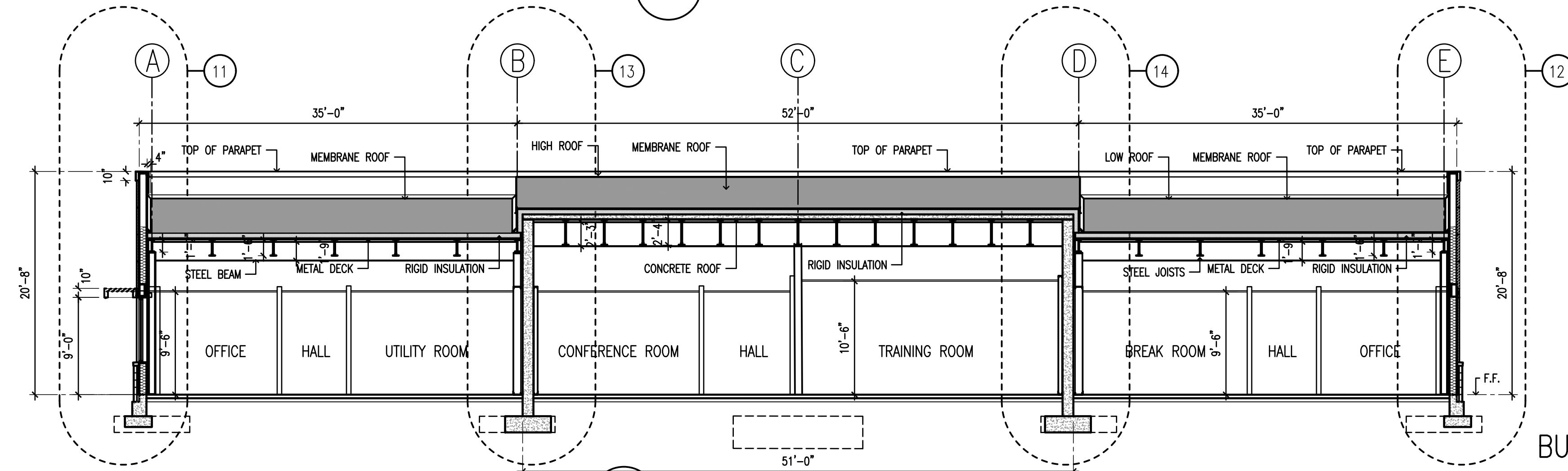
1 BUILDING SECTION THRU I T



2 BUILDING SECTION THRU ICC OPERATIONS CENTER



3 BUILDING SECTION THRU EMA



4 BUILDING CROSS SECTION

BUILDING SECTIONS
scale: 1/8" = 1'-0"

scale is accurate on 24"x36" sheets only

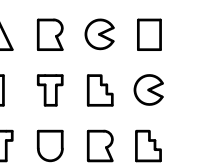
REVISIONS	BY
1	11-21-2025 SJC
2	

DRAWINGS COPYRIGHT © 2025
ALL RIGHTS RESERVED
Stephen Coker Architect LLC



Not Valid for Construction
without Registration Seal

Shelby County
EMA - IT FACILITY
260 - McDow Road
Shelby County, Alabama 35051



Stephen
Coker
Architect
LLC

1000 Glen View Road
Birmingham, Alabama 35222

Phone 205/595-0021

E-mail:
steve@cokerarch.com

DRAWING DATE	10-27-2025
DRAWN BY	SJC
PROJECT NO.	250407

BUILDING SECTIONS

SHEET NO.

A6

11 OF 25/1A SHEETS

C:\Users\steve\OneDrive\Desktop\CURRENT PROJECTS\SHELBY COUNTY EMA-IT\SHELBY COUNTY EMA-IT REVERSED PLAN.dwg, 11/20/2025 6:49:00 PM

WALL INSULATION DESIGNATIONS

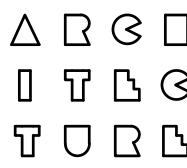
REVISIONS	BY
2	11-21-2025 SJC

DRAWINGS COPYRIGHT © 2025
ALL RIGHTS RESERVED
Stephen Coker Architect LLC



Not Valid for Construction
without Registration Seal

Shelby County
EMA - IT FACILITY
260 - McDow Road
Shelby County, Alabama 35051



Stephen
Coker
Architect
LLC

1000 Glen View Road
Birmingham, Alabama 35222

Phone 205/595-0021

E-mail:
steve@cokerarch.com

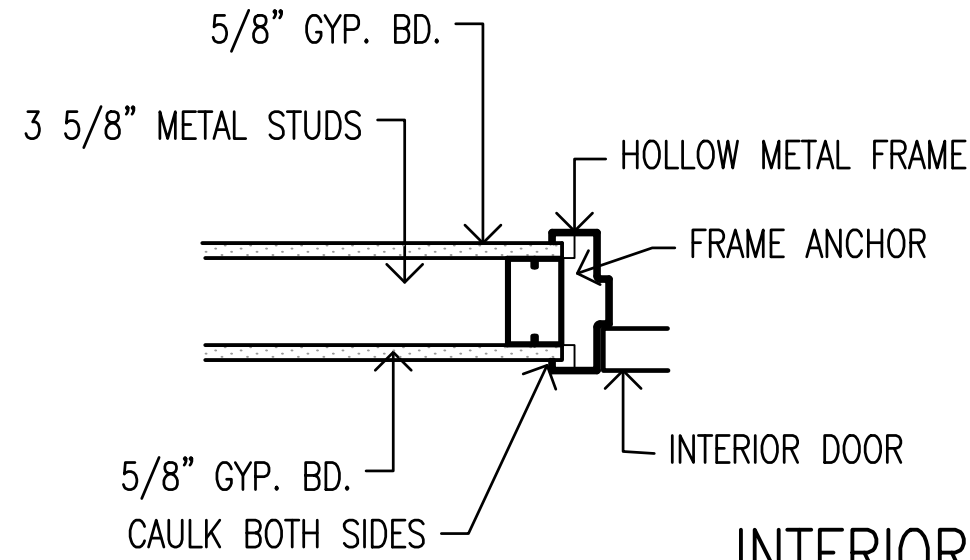
DRAWING DATE	10-27-2025
DRAWN BY	SJC
PROJECT NO.	250407

WALL DETAILS

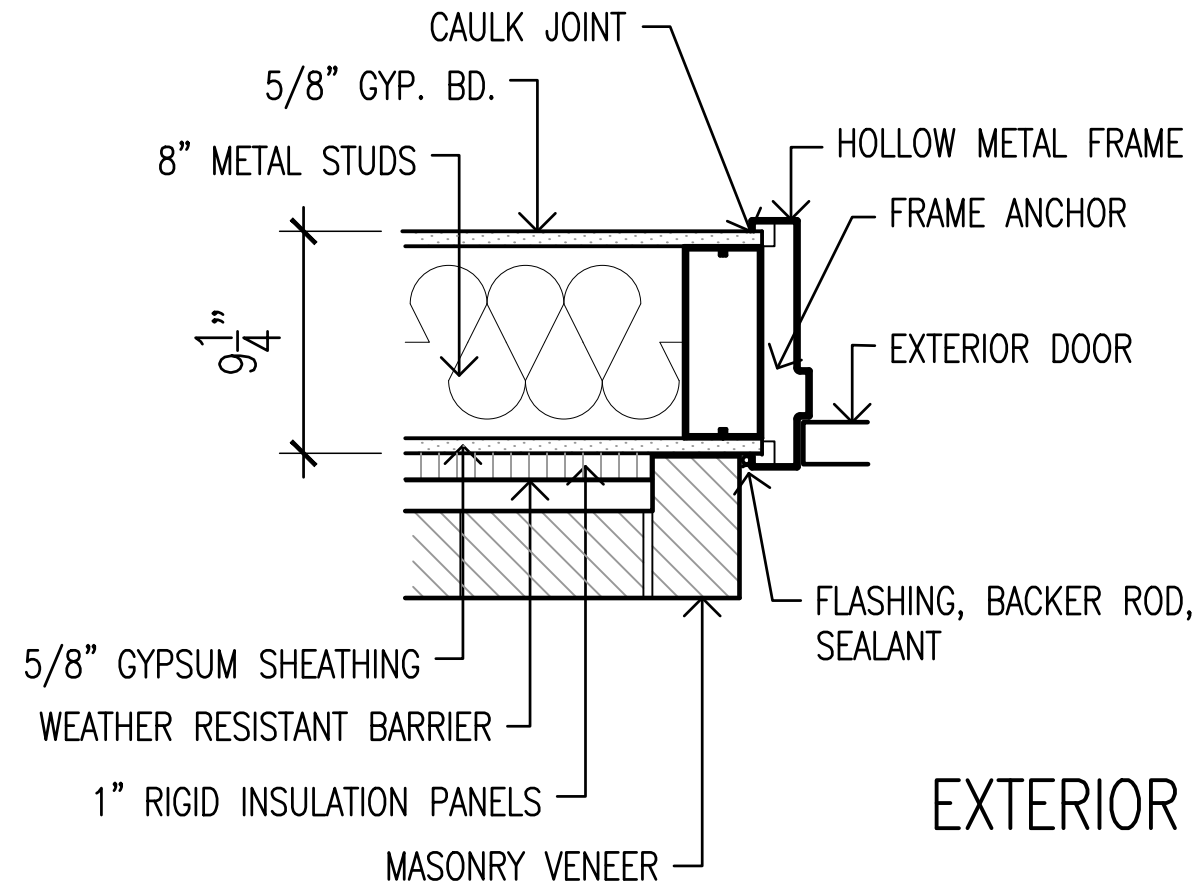
SHEET NO.

A12

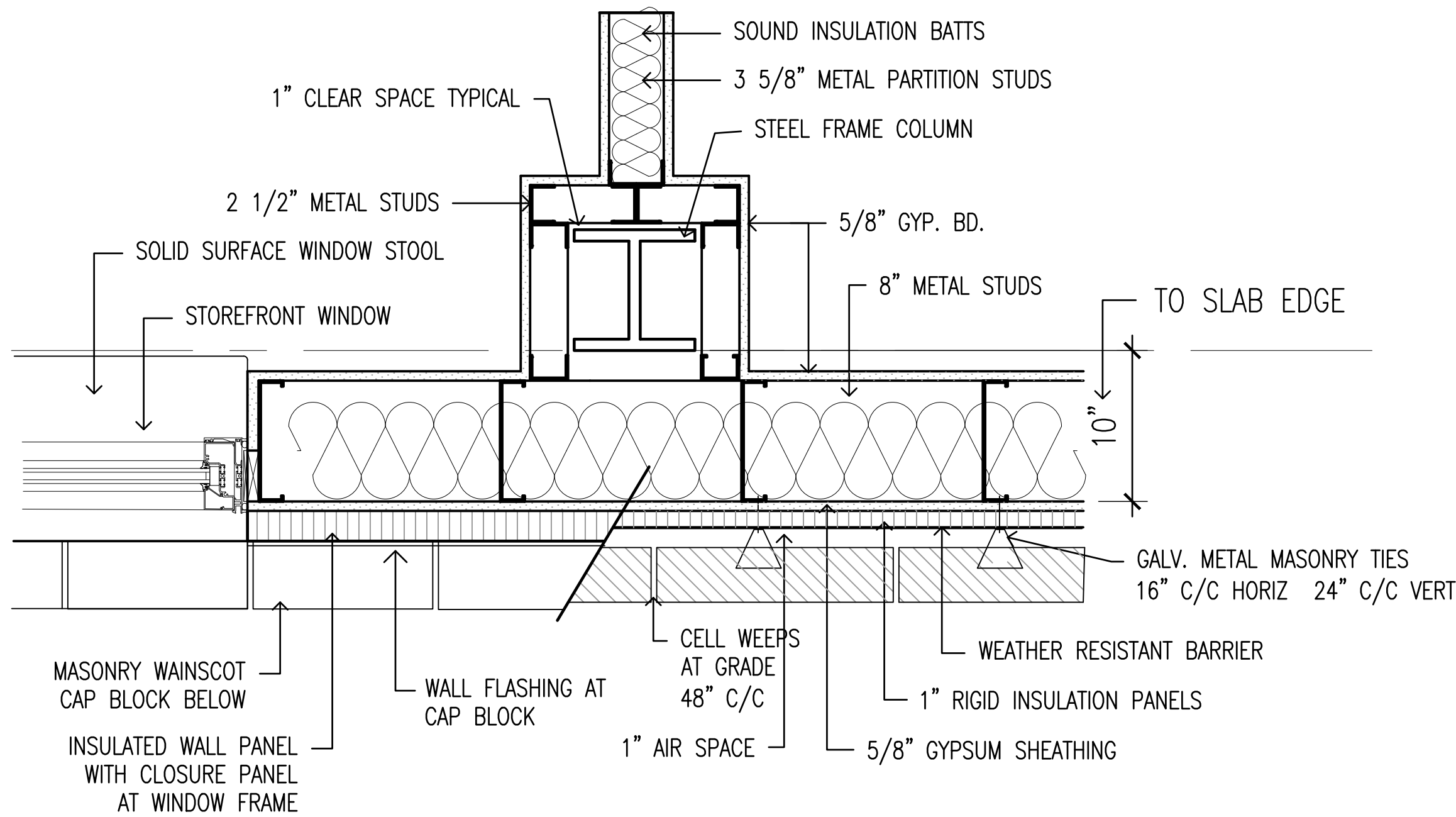
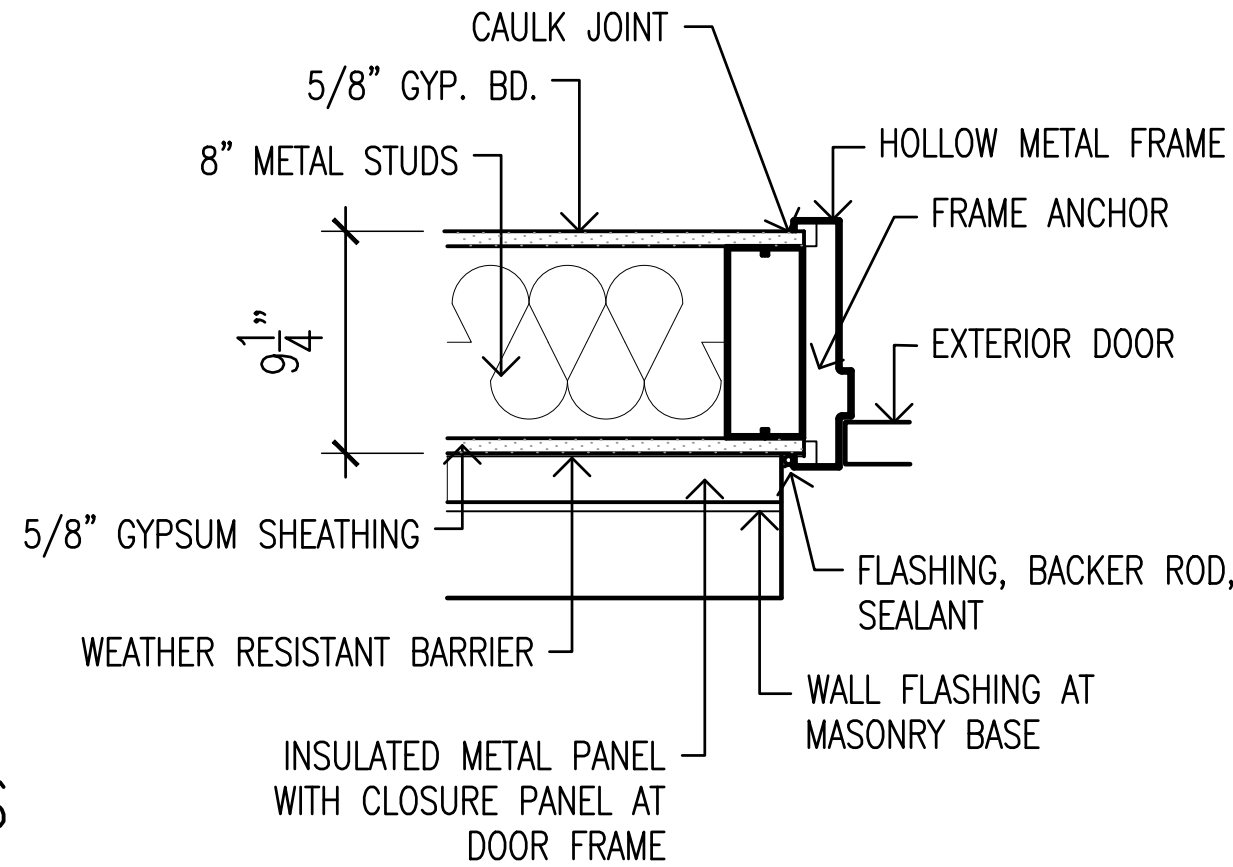
17 OF 25(A) SHEETS



INTERIOR DOORS



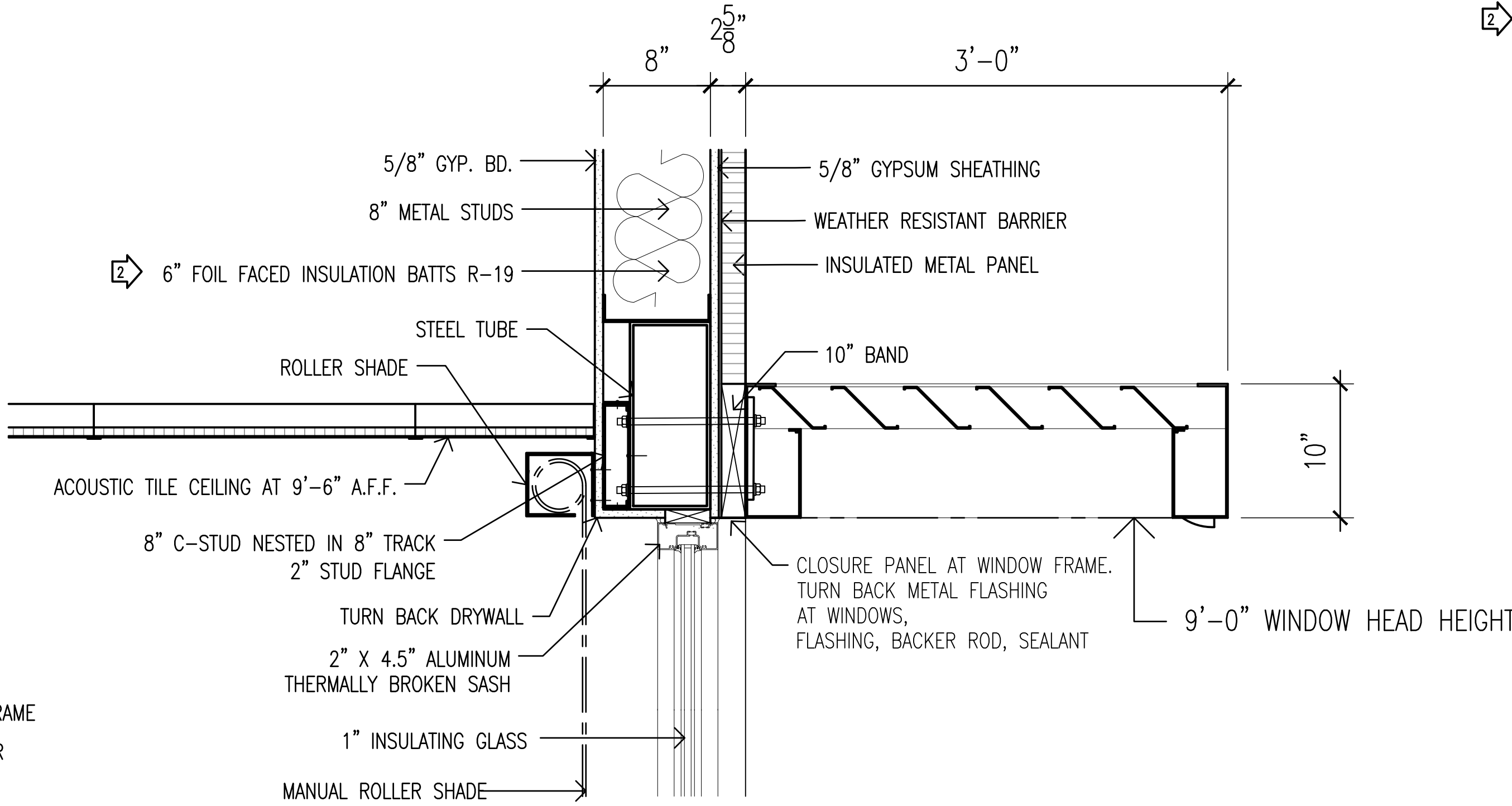
EXTERIOR DOORS



ABOVE WAINSCOT AT
OFFICE WINDOWS

PLAN VIEW
COLUMN FURRINGS

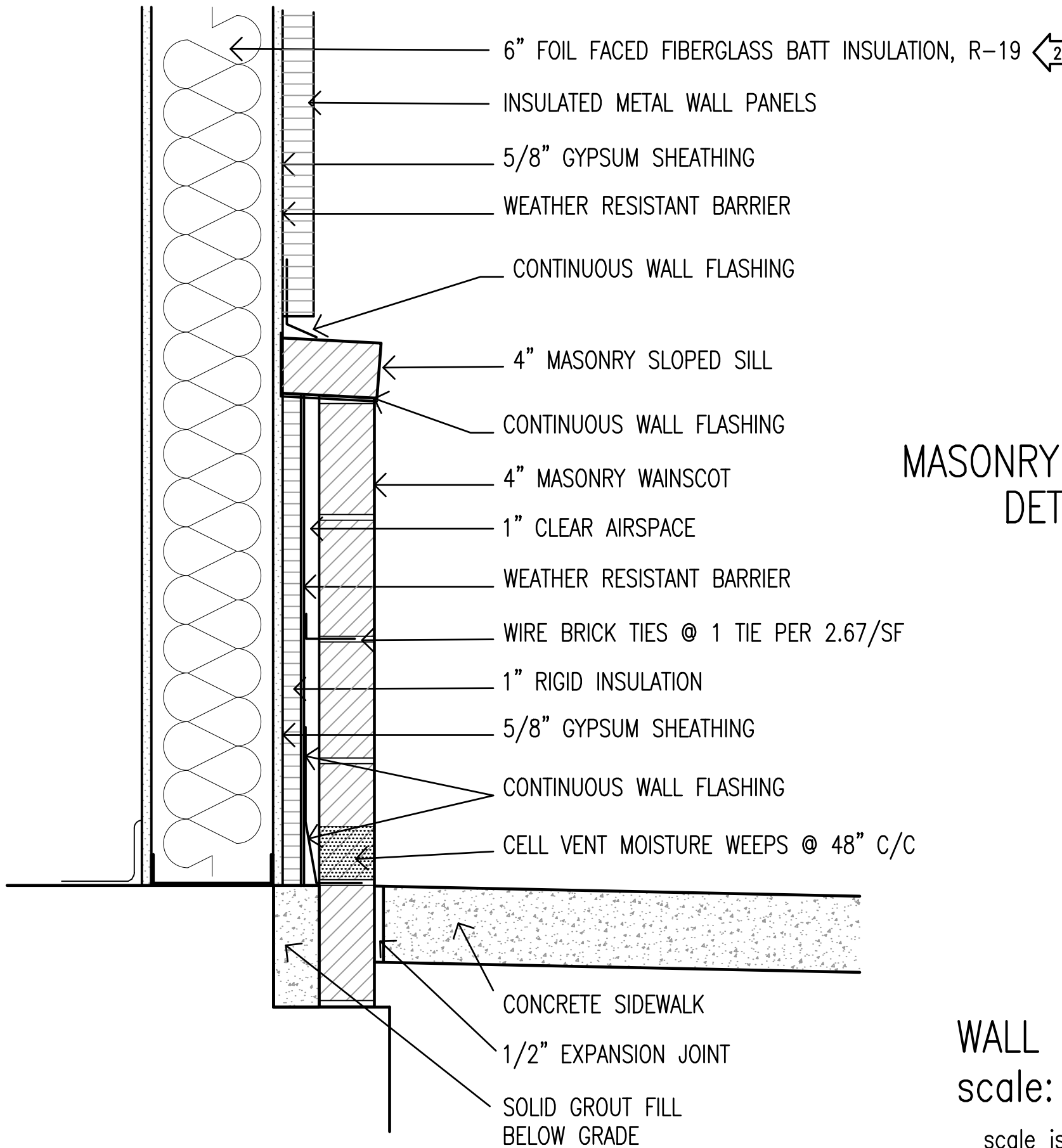
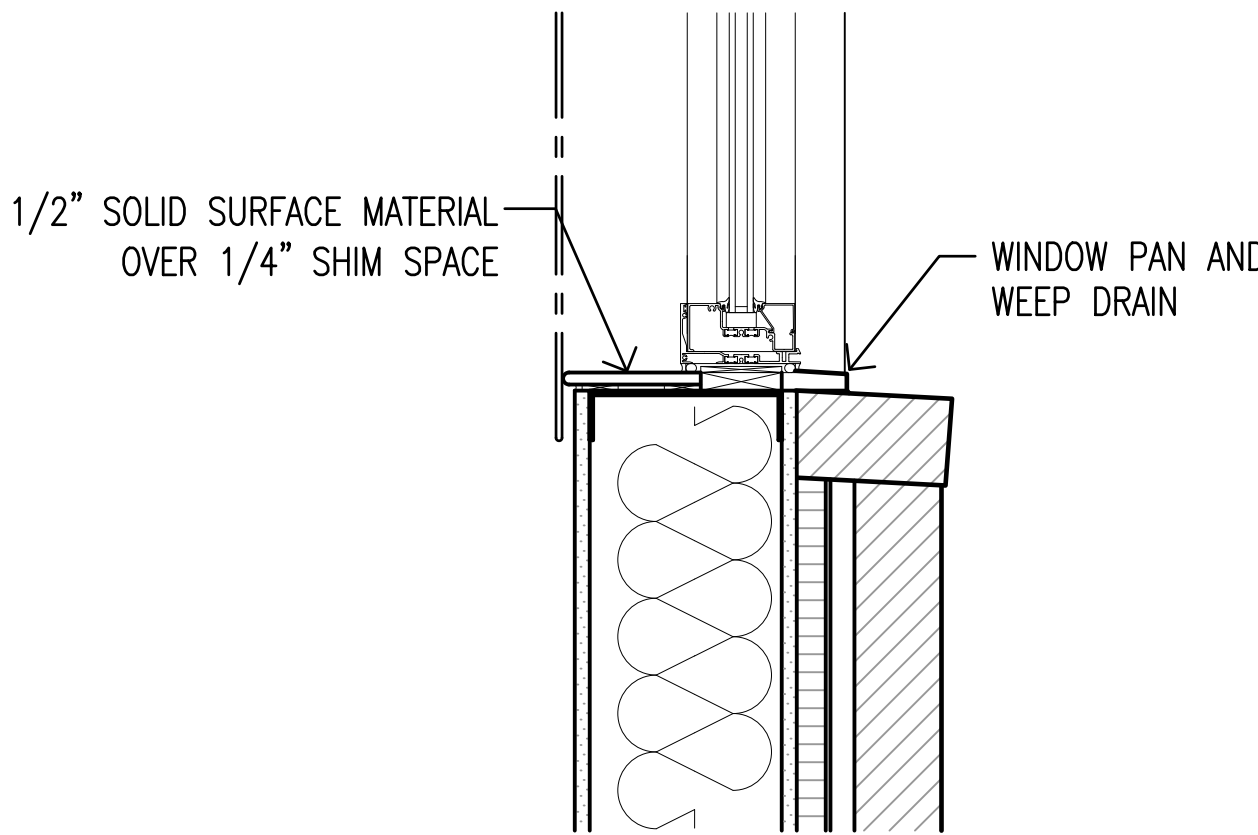
BELOW WAINSCOT AT
EXTERIOR WALL



INTERIOR

EXTERIOR

OFFICE WINDOWS
DETAILS



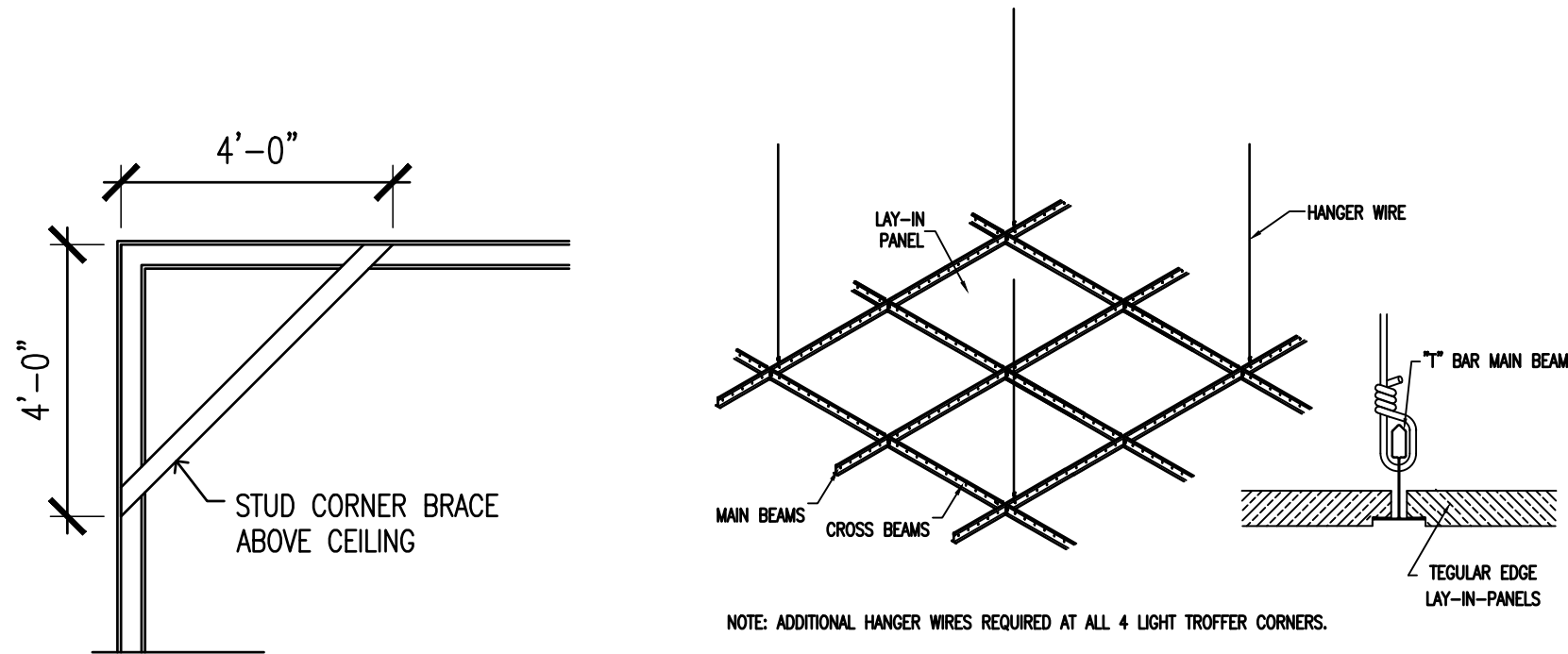
MASONRY WAINSCOT
DETAILS

WALL DETAILS
scale: 1 1/2" = 1'-0"
scale is accurate on 24"x36" sheets only

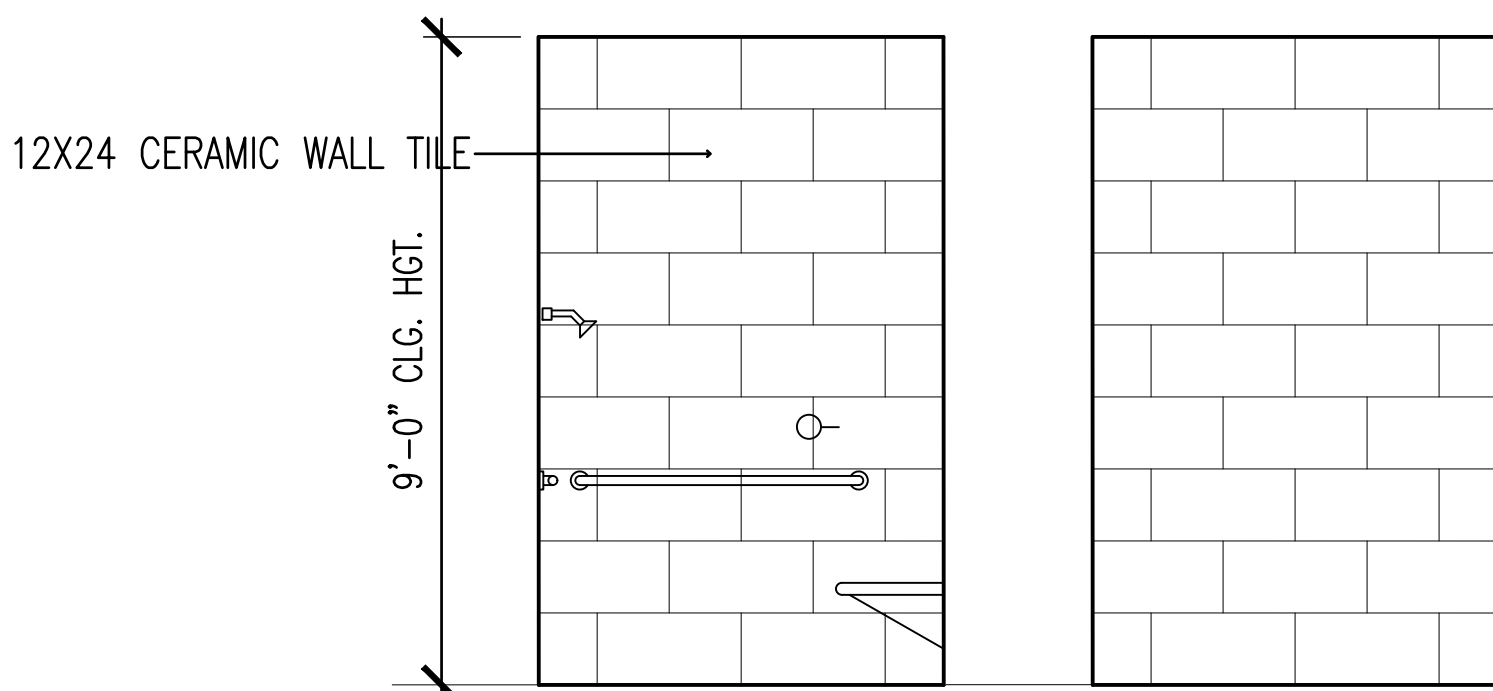
INTERIOR FINISH SCHEDULE – I T SECTION									
GYPSUM BOARD LEVEL 4 FINISH					CERAMIC TILE THINSET				
ROOM	FLOOR	WALL BASE	WALLS	WAINSCOT	CORNER GDS	CEILING	*CLG. HGT.*	DOORS	DOOR FRAME
101 VESTIBULE	LUXURY VINYL	RUBBER	VINYL WALL FABRIC			2X2 ATC	9'-6"	STAINED AND SEALED	SEMI-GLOSS ENAMEL
102 OFFICE 1	CARPET TILE	RUBBER	PAINTED GYP. BD.			2X2 ATC	9'-6"	STAINED AND SEALED	SEMI-GLOSS ENAMEL
103 OFFICE 2	CARPET TILE	RUBBER	PAINTED GYP. BD.			2X2 ATC	9'-6"	STAINED AND SEALED	SEMI-GLOSS ENAMEL
104 OFFICE 3	CARPET TILE	RUBBER	PAINTED GYP. BD.			2X2 ATC	9'-6"	STAINED AND SEALED	SEMI-GLOSS ENAMEL
105 OFFICE 4	CARPET TILE	RUBBER	PAINTED GYP. BD.			2X2 ATC	9'-6"	STAINED AND SEALED	SEMI-GLOSS ENAMEL
106 OFFICE 5	CARPET TILE	RUBBER	PAINTED GYP. BD.			2X2 ATC	9'-6"	STAINED AND SEALED	SEMI-GLOSS ENAMEL
107 OFFICE 6	CARPET TILE	RUBBER	PAINTED GYP. BD.			2X2 ATC	9'-6"	STAINED AND SEALED	SEMI-GLOSS ENAMEL
108 OFFICE 7	CARPET TILE	RUBBER	PAINTED GYP. BD.			2X2 ATC	9'-6"	STAINED AND SEALED	SEMI-GLOSS ENAMEL
109 OFFICE 8	CARPET TILE	RUBBER	PAINTED GYP. BD.			2X2 ATC	9'-6"	STAINED AND SEALED	SEMI-GLOSS ENAMEL
110 OFFICE 9	CARPET TILE	RUBBER	PAINTED GYP. BD.			2X2 ATC	9'-6"	STAINED AND SEALED	SEMI-GLOSS ENAMEL
111 OFFICE 10	CARPET TILE	RUBBER	PAINTED GYP. BD.			2X2 ATC	9'-6"	STAINED AND SEALED	SEMI-GLOSS ENAMEL
112 OFFICE 11	CARPET TILE	RUBBER	PAINTED GYP. BD.			2X2 ATC	9'-6"	STAINED AND SEALED	SEMI-GLOSS ENAMEL
113 OFFICE 12	CARPET TILE	RUBBER	PAINTED GYP. BD.			2X2 ATC	9'-6"	STAINED AND SEALED	SEMI-GLOSS ENAMEL
114 CONFERENCE ROOM	CARPET TILE	RUBBER	PAINTED GYP. BD.			2X2 ATC	9'-6"	STAINED AND SEALED	SEMI-GLOSS ENAMEL
115 COPIER ROOM	CARPET TILE	RUBBER			2X2 ATC	9'-6"	STAINED AND SEALED	SEMI-GLOSS ENAMEL	
116 MENS REST ROOM	CERAMIC TILE	CERAMIC TILE	CERAMIC TILE		2X2 ATC	9'-0"	STAINED AND SEALED	SEMI-GLOSS ENAMEL	
117 LADIES REST ROOM	CERAMIC TILE	CERAMIC TILE	CERAMIC TILE		2X2 ATC	9'-0"	STAINED AND SEALED	SEMI-GLOSS ENAMEL	
118 BREAK ROOM	LUXURY VINYL	RUBBER	PAINTED GYP. BD.		2X2 ATC	9'-6"	STAINED AND SEALED	SEMI-GLOSS ENAMEL	
119 UTILITY ROOM	LUXURY VINYL	RUBBER	PAINTED GYP. BD.		2X2 ATC	9'-6"	STAINED AND SEALED	SEMI-GLOSS ENAMEL	
120 WORK CARRELS ROOM	CARPET TILE	RUBBER	PAINTED GYP. BD.		2X2 ATC	9'-6"	STAINED AND SEALED	SEMI-GLOSS ENAMEL	
121 CORRIDOR	LUXURY VINYL	RUBBER	PAINTED GYP. BD.		X	2X2 ATC	9'-6"	STAINED AND SEALED	SEMI-GLOSS ENAMEL
122 – 149 (RESERVED)									

INTERIOR FINISH SCHEDULE – ICC 500 SECTION									
GYPSUM BOARD LEVEL 4 FINISH					CERAMIC TILE THINSET				
ROOM	FLOOR	WALL BASE	WALLS	WAINSCOT	CORNER GDS	CEILING	*CLG. HGT.*	DOORS	DOOR FRAME
150 OPERATIONS ROOM	CARPET TILE	RUBBER	PAINTED GYP. BD.			2X2 ATC	12'-0"	STAINED AND SEALED	SEMI-GLOSS ENAMEL
151 RADIO ROOM	CARPET TILE	RUBBER	PAINTED GYP. BD.			2X2 ATC	9'-6"	STAINED AND SEALED	SEMI-GLOSS ENAMEL
152 RADIO ROOM STORAGE	LUXURY VINYL	RUBBER	PAINTED GYP. BD.			2X2 ATC	9'-6"	STAINED AND SEALED	SEMI-GLOSS ENAMEL
153 TRAINING ROOM	LUXURY VINYL	RUBBER	PAINTED GYP. BD.			2X2 ATC	10'-6"	STAINED AND SEALED	SEMI-GLOSS ENAMEL
154 CONFERENCE ROOM	CARPET TILE	RUBBER	PAINTED GYP. BD.			2X2 ATC	9'-6"	STAINED AND SEALED	SEMI-GLOSS ENAMEL
155 CLOSET	CARPET TILE	RUBBER	PAINTED GYP. BD.			2X2 ATC	9'-6"	STAINED AND SEALED	SEMI-GLOSS ENAMEL
156 MENS REST ROOM	CERAMIC TILE	CERAMIC TILE	CERAMIC TILE		2X2 ATC	9'-0"	STAINED AND SEALED	SEMI-GLOSS ENAMEL	
157 UNISEX REST ROOM	CERAMIC TILE	CERAMIC TILE	CERAMIC TILE		2X2 ATC	9'-0"	STAINED AND SEALED	SEMI-GLOSS ENAMEL	
158 LADIES REST ROOM	CERAMIC TILE	CERAMIC TILE	CERAMIC TILE		2X2 ATC	9'-0"	STAINED AND SEALED	SEMI-GLOSS ENAMEL	
159 UTILITY / STORAGE	LUXURY VINYL	RUBBER	PAINTED GYP. BD.			2X2 ATC	9'-6"	STAINED AND SEALED	SEMI-GLOSS ENAMEL
160 SERVER ROOM (1 HOUR F.R.)	SEALED CONC.	RUBBER	PAINTED GYP. BD.			NO CLG.	NO CLG.	SEMI-GLOSS ENAMEL	SEMI-GLOSS ENAMEL
161 IT WORKROOM	CARPET	RUBBER	PAINTED GYP. BD.			2X2 ATC	9'-6"	STAINED AND SEALED	SEMI-GLOSS ENAMEL
162 IT STORAGE	LUXURY VINYL	RUBBER	PAINTED GYP. BD.			2X2 ATC	9'-6"	STAINED AND SEALED	SEMI-GLOSS ENAMEL
163 ELECTRICAL ROOM (2 HOUR F.R.)	SEALED CONC.	RUBBER	PAINTED GYP. BD.			NO CLG.	NO CLG.	SEMI-GLOSS ENAMEL	SEMI-GLOSS ENAMEL
164 MECHANICAL ROOM (1 HOUR F.R.)	SEALED CONC.	RUBBER	PAINTED GYP. BD.			NO CLG.	NO CLG.	STAINED AND SEALED	SEMI-GLOSS ENAMEL
165 CORRIDOR	LUXURY VINYL	RUBBER	PAINTED GYP. BD.		X	2X2 ATC	9'-6"	SEMI-GLOSS ENAMEL	SEMI-GLOSS ENAMEL
166 CORRIDOR	LUXURY VINYL	RUBBER	PAINTED GYP. BD.		X	2X2 ATC	9'-6"	SEMI-GLOSS ENAMEL	SEMI-GLOSS ENAMEL
167 MECH / BOILER ROOM (1 HOUR F.R.)	SEALED CONC.	RUBBER	PAINTED GYP. BD.			NO CLG.	NO CLG.	SEMI-GLOSS ENAMEL	SEMI-GLOSS ENAMEL

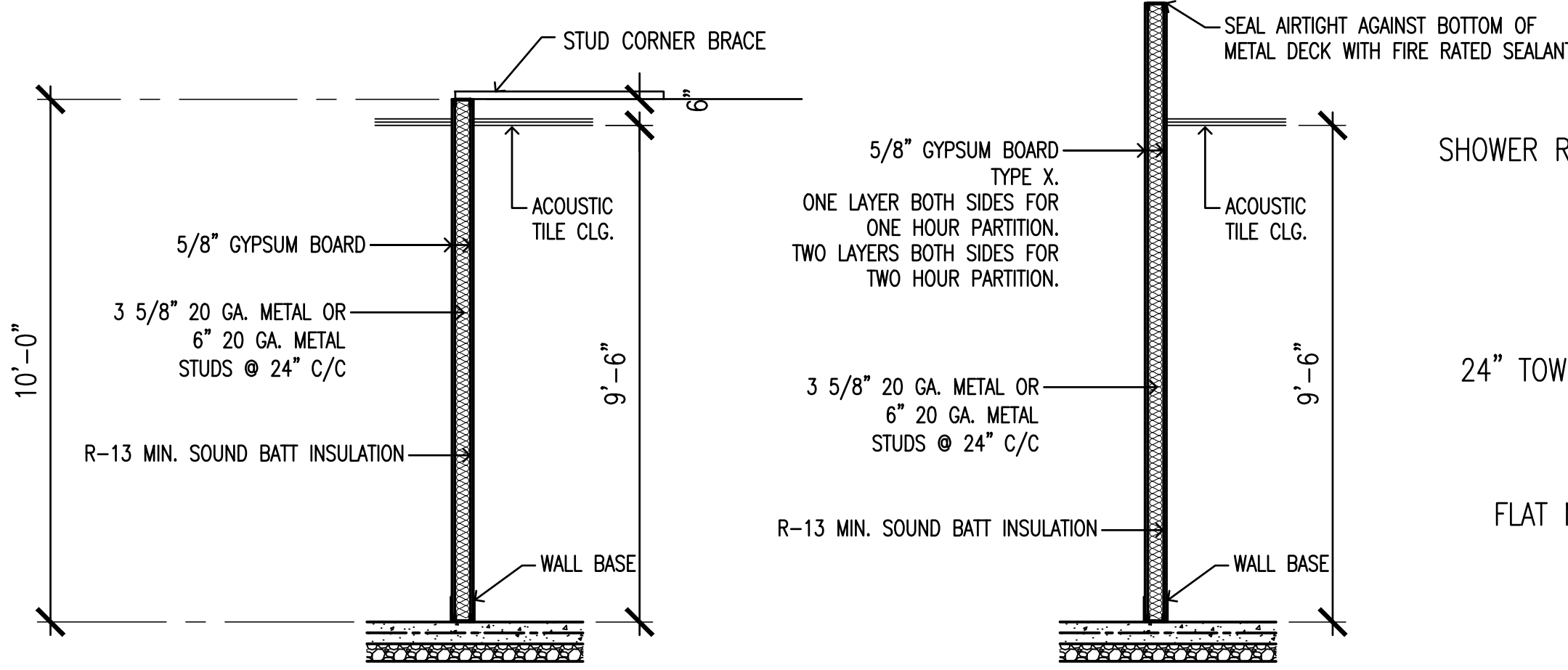
INTERIOR FINISH SCHEDULE – EMA SECTION									
GYPSUM BOARD LEVEL 4 FINISH					CERAMIC TILE THINSET				
ROOM	FLOOR	WALL BASE	WALLS	WAINSCOT	CORNER GDS	CEILING	*CLG. HGT.*	DOORS	DOOR FRAME
125 VESTIBULE	LUXURY VINYL	RUBBER	VINYL WALL FABRIC			2X2 ATC	9'-6"	STAINED AND SEALED	SEMI-GLOSS ENAMEL
126 OFFICE 13	CARPET TILE	RUBBER	PAINTED GYP. BD.			2X2 ATC	9'-6"	STAINED AND SEALED	SEMI-GLOSS ENAMEL
127 OFFICE 14	CARPET TILE	RUBBER	PAINTED GYP. BD.			2X2 ATC	9'-6"	STAINED AND SEALED	SEMI-GLOSS ENAMEL
128 OFFICE 15	CARPET TILE	RUBBER	PAINTED GYP. BD.			2X2 ATC	9'-6"	STAINED AND SEALED	SEMI-GLOSS ENAMEL
129 OFFICE 16	CARPET TILE	RUBBER	PAINTED GYP. BD.			2X2 ATC	9'-6"	STAINED AND SEALED	SEMI-GLOSS ENAMEL
130 OFFICE 17	CARPET TILE	RUBBER	PAINTED GYP. BD.			2X2 ATC	9'-6"	STAINED AND SEALED	SEMI-GLOSS ENAMEL
131 OFFICE 18	CARPET TILE	RUBBER	PAINTED GYP. BD.			2X2 ATC	9'-6"	STAINED AND SEALED	SEMI-GLOSS ENAMEL
132 OFFICE 19	CARPET TILE	RUBBER	PAINTED GYP. BD.			2X2 ATC	9'-6"	STAINED AND SEALED	SEMI-GLOSS ENAMEL
133 OFFICE 20	CARPET TILE	RUBBER	PAINTED GYP. BD.			2X2 ATC	9'-6"	STAINED AND SEALED	SEMI-GLOSS ENAMEL
134 STORAGE ROOM	LUXURY VINYL	RUBBER	PAINTED GYP. BD.			2X2 ATC	9'-6"	STAINED AND SEALED	SEMI-GLOSS ENAMEL
135 BREAK ROOM	LUXURY VINYL	RUBBER	PAINTED GYP. BD.			2X2 ATC	9'-6"	STAINED AND SEALED	SEMI-GLOSS ENAMEL
136 MENS REST ROOM	CERAMIC TILE	CERAMIC TILE	CERAMIC TILE		2X2 ATC	9'-0"	STAINED AND SEALED	SEMI-GLOSS ENAMEL	
137 LADIES REST ROOM	CERAMIC TILE	CERAMIC TILE	CERAMIC TILE		2X2 ATC	9'-0"	STAINED AND SEALED	SEMI-GLOSS ENAMEL	
138 SHOWER	CERAMIC TILE	CERAMIC TILE	CERAMIC TILE		ENAMEL PAINT M.R. GYP. BD.	9'-0"	STAINED AND SEALED	SEMI-GLOSS ENAMEL	
139 SHOWER	CERAMIC TILE	CERAMIC TILE	CERAMIC TILE		ENAMEL PAINT M.R. GYP. BD.	9'-0"	STAINED AND SEALED	SEMI-GLOSS ENAMEL	
140 UTILITY ROOM	LUXURY VINYL	RUBBER	PAINTED GYP. BD.		2X2 ATC	9'-6"	STAINED AND SEALED	SEMI-GLOSS ENAMEL	
141 RECORDS STORAGE	LUXURY VINYL	RUBBER	PAINTED GYP. BD.		2X2 ATC	9'-6"	STAINED AND SEALED	SEMI-GLOSS ENAMEL	
142 TOOLS/ ROLL OUT (1 HOUR F.R.)	SEALED CONC.	RUBBER	PAINTED GYP. BD.		NO CLG.	NO CLG.	SEMI-GLOSS ENAMEL	SEMI-GLOSS ENAMEL	
143 CORRIDOR	LUXURY VINYL	RUBBER	PAINTED GYP. BD.		X	2X2 ATC	9'-6"	STAINED AND SEALED	SEMI-GLOSS ENAMEL
144 CORRIDOR	LUXURY VINYL	RUBBER	PAINTED GYP. BD.		X	2X2 ATC	9'-6"	STAINED AND SEALED	SEMI-GLOSS ENAMEL
145-149 (RESERVED)									



ACOUSTIC CEILING DETAILS
scale: 3/8" = 1'-0"

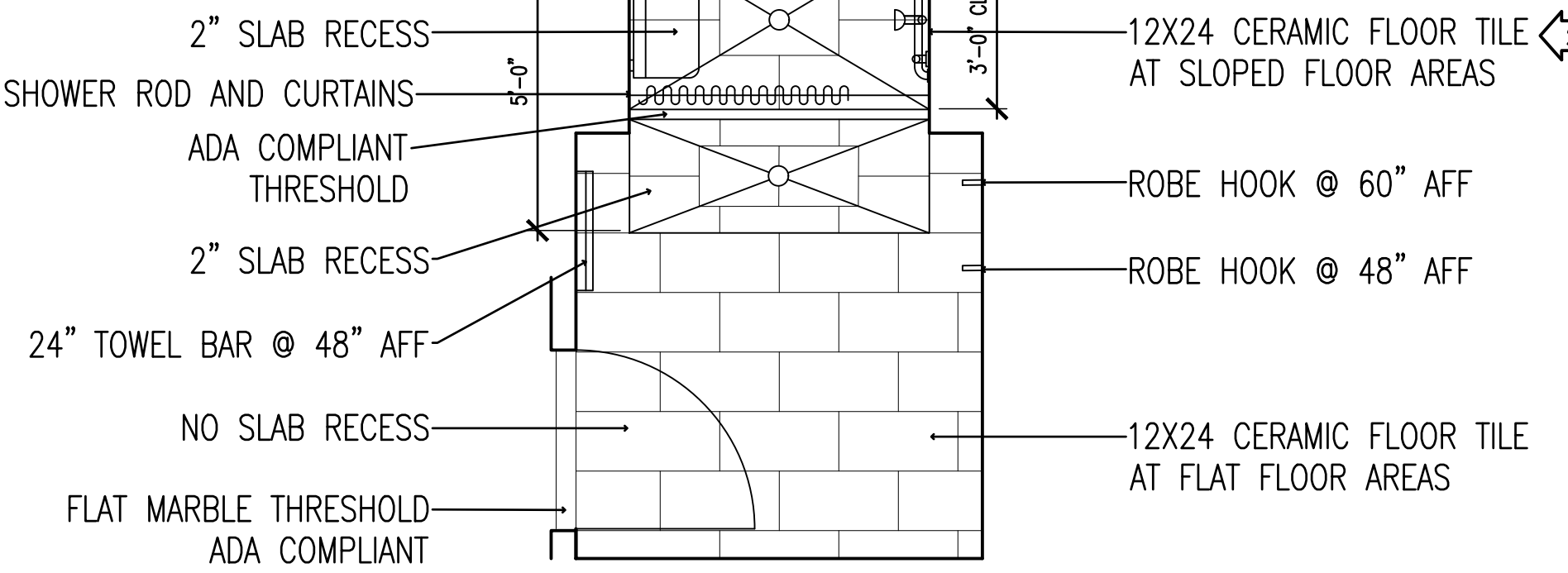


CERAMIC WALL TILE PATTERN (SHOWN AT SHOWER)
CERAMIC WALL TILE PATTERN (SHOWN AT REST ROOM)



TYPICAL INTERIOR PARTITION
TYPICAL INTERIOR FIRE RATED PARTITION

INTERIOR PARTITION DETAILS
scale: 3/8" = 1'-0"



CERAMIC FLOOR TILE PATTERN (SHOWN AT SHOWER)
12X24 CERAMIC FLOOR TILE AT SLOPED FLOOR AREAS

138
SHOWER

CERAMIC TILE DETAILS
scale: 3/8" = 1'-0"

INTERIOR FINISHES: ** INDICATES NO SUBSTITUTION

RUBBER BASE : 4" COVE JOHNSONITE #63 "BURNT UMBER B"

**CARPET TILES: INTERFACE STYLE: EARTH II COLOR: PLATEAU

LUXURY VINYL TILE: MOHAWK GROUP – HOT & HEAVY – LINEATE – COLOR 857 MARKER

ACOUSTICAL TILE: 2X2 SQUARE TEGULAR-EDGE ACOUSTIC CEILING TILE
USG 86785 – WHITE

ACOUSTICAL GRID: DONN DXL 15/16" EZCS SYSTEM – WHITE

WALL PAINT: SW 6073 "PERFECT GREIGE" EGGSHELL LATEX

**VINYL WALL FABRIC: MDC MODERN INDUSTRY GUNMETAL 3063 MI / 4131

DOORS AND FRAMES: SW 7020 "BLACK FOX" SEMI-GLOSS

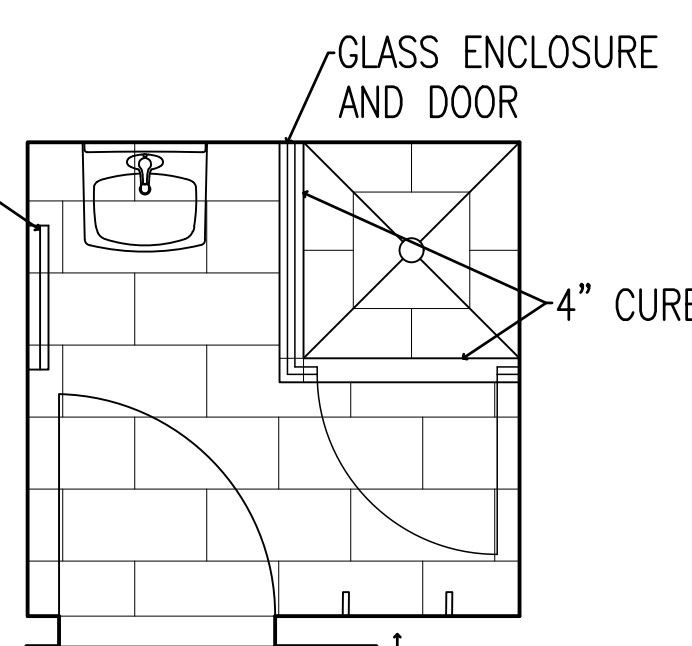
CORNER GUARDS: IPC 150 3" X 8' "PEPPERDUST" 0119. INSTALL AT CORRIDOR OUTSIDE CORNERS.

CERAMIC WALL AND FLOOR TILE: 12" X 24" DAL TILE ADVANTAGE COLOR "RENOIR GREY AQ03" MATTE

CERAMIC TILE GROUT: MAPEI, 1/4" WIDE GROUT JOINT, COLOR 5009 GRAY.

SEAL CERAMIC TILE AND GROUT: MIRACLE SEALANTS 511, SOLVENT BASED.

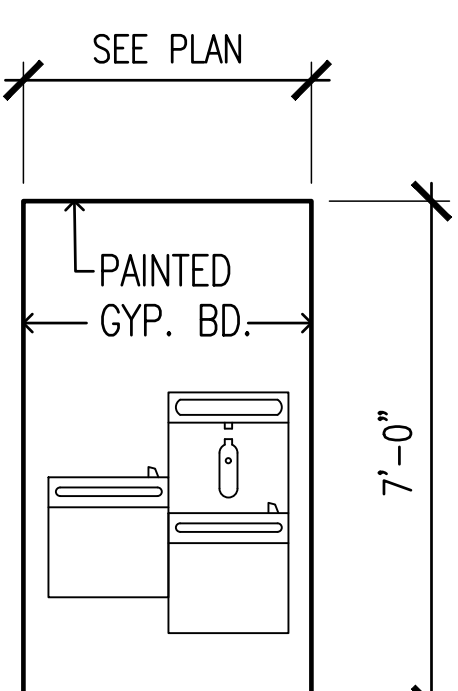
CLEAR SEALED CONCRETE SLAB: ASHFORD FORMULA DENSIFIER-SEALER



139
SHOWER

PROVIDE COMPLETE SYSTEM OF SCHLUTER-KERDI PRODUCTS (SHOWER KIT)

PROVIDE SLOPED PREFABRICATED SHOWER PAN TO CENTER DRAIN.



DRINKING FOUNTAIN ALCOVE

scale is accurate on 24"x36" sheets only

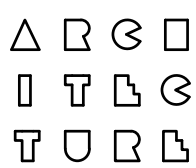
REVISIONS	BY
11-21-2025	SJC

DRAWINGS COPYRIGHT © 2025
ALL RIGHTS RESERVED
Stephen Coker Architect LLC



Not Valid for Construction
without Registration Seal

Shelby County
EMA - IT FACILITY
260 - McDow Road
Shelby County, Alabama 35051



Stephen
Coker
Architect
LLC

1000 Glen View Road
Birmingham, Alabama 35222

Phone 205/595-0021

E-mail:
steve@cokerarch.com

DRAWING DATE	10-27-2025
DRAWN BY	SJC
PROJECT NO.	250407

FINISH SCHEDULES
MISC. DETAILS

SHEET NO.

A15

20 OF 25(A) SHEETS

C:\Users\steve\OneDrive\Desktop\CURRENT PROJECTS\SHELBY COUNTY EMA-IT\SHELBY COUNTY EMA-IT REVERSED PLAN.dwg, 11/20/2025 6:49:07 PM

2 FINISHES AND COLORS.
ADDITIONAL DETAILS.

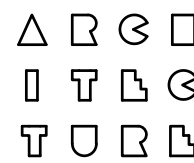
REVISIONS	BY
2	11-21-2025 SJC

DRAWINGS COPYRIGHT © 2025
ALL RIGHTS RESERVED
Stephen Coker Architect LLC



Not Valid for Construction
without Registration Seal

Shelby County
EMA - IT FACILITY
260 - McDow Road
Shelby County, Alabama 35051



Stephen
Coker
Architect
LLC

1000 Glen View Road
Birmingham, Alabama 35222

Phone 205/595-0021

E-mail:
steve@cokerarch.com

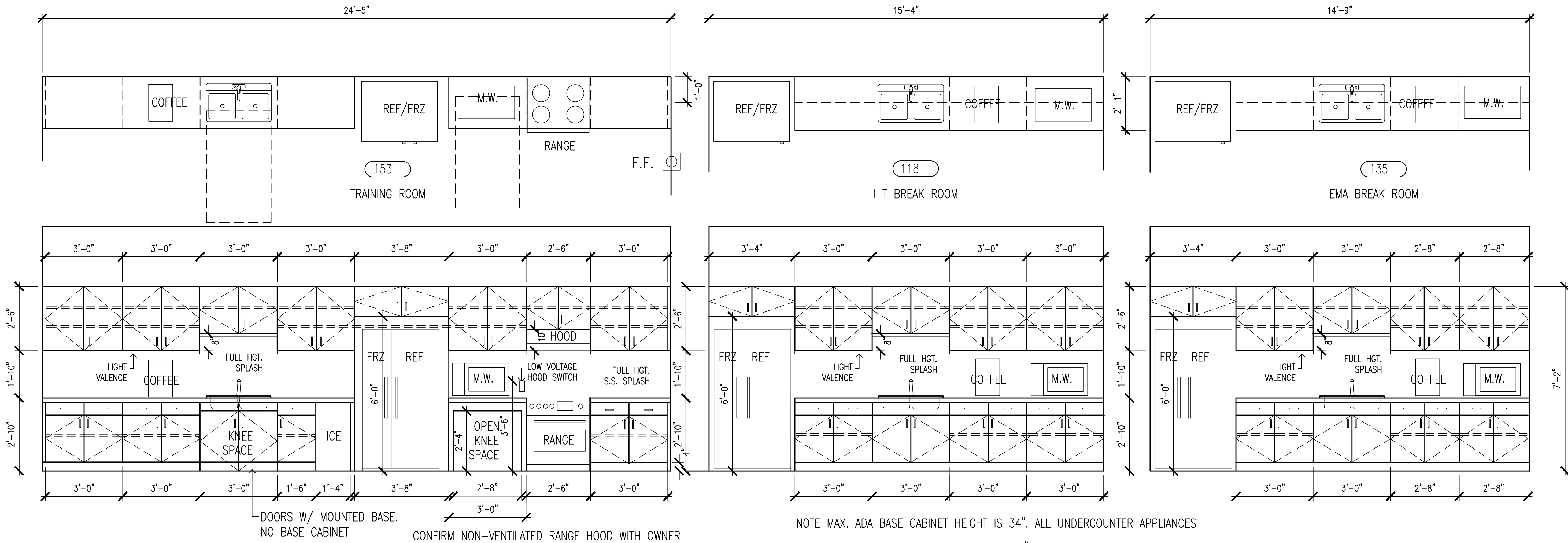
DRAWING DATE	10-27-2025
DRAWN BY	SJC
PROJECT NO.	250407

CASEWORK DETAILS 1

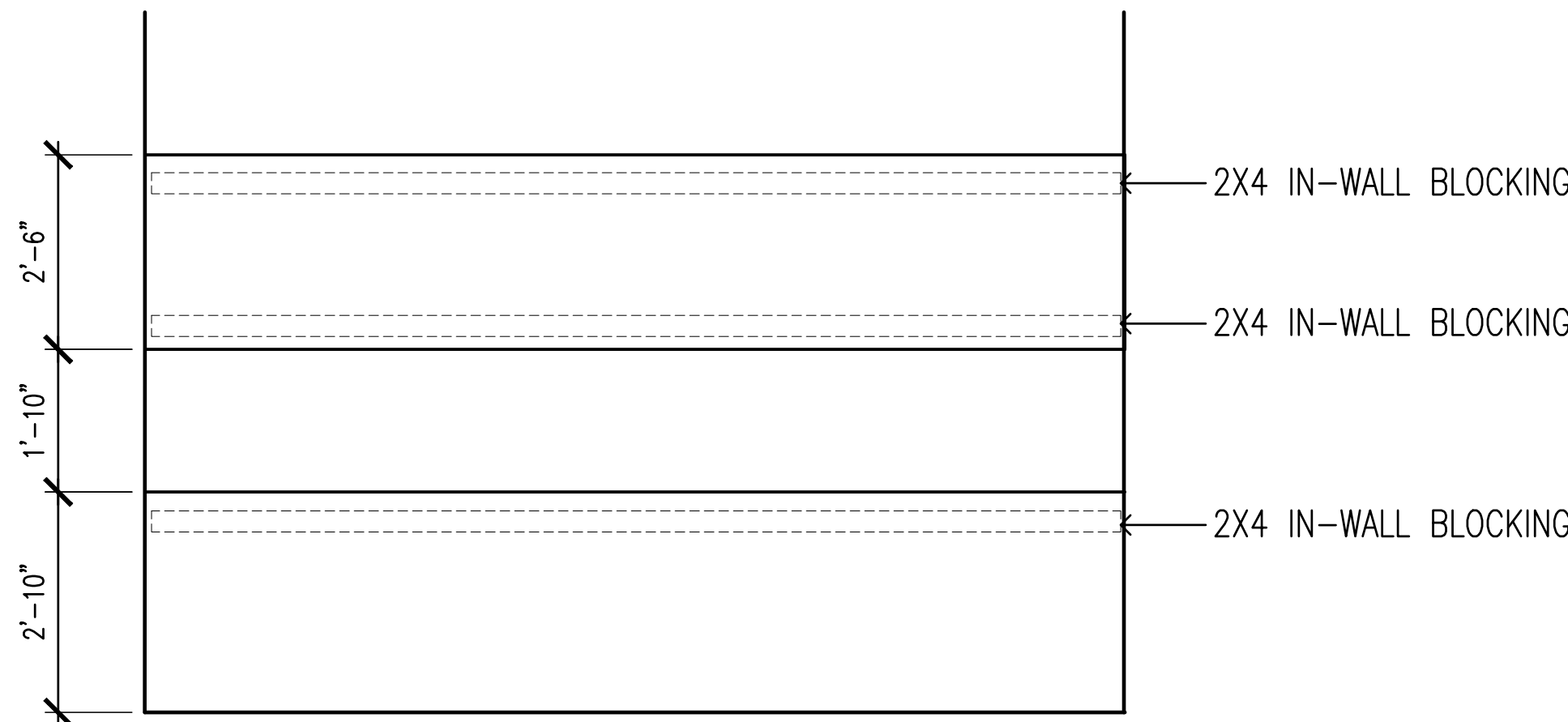
SHEET NO.

A18

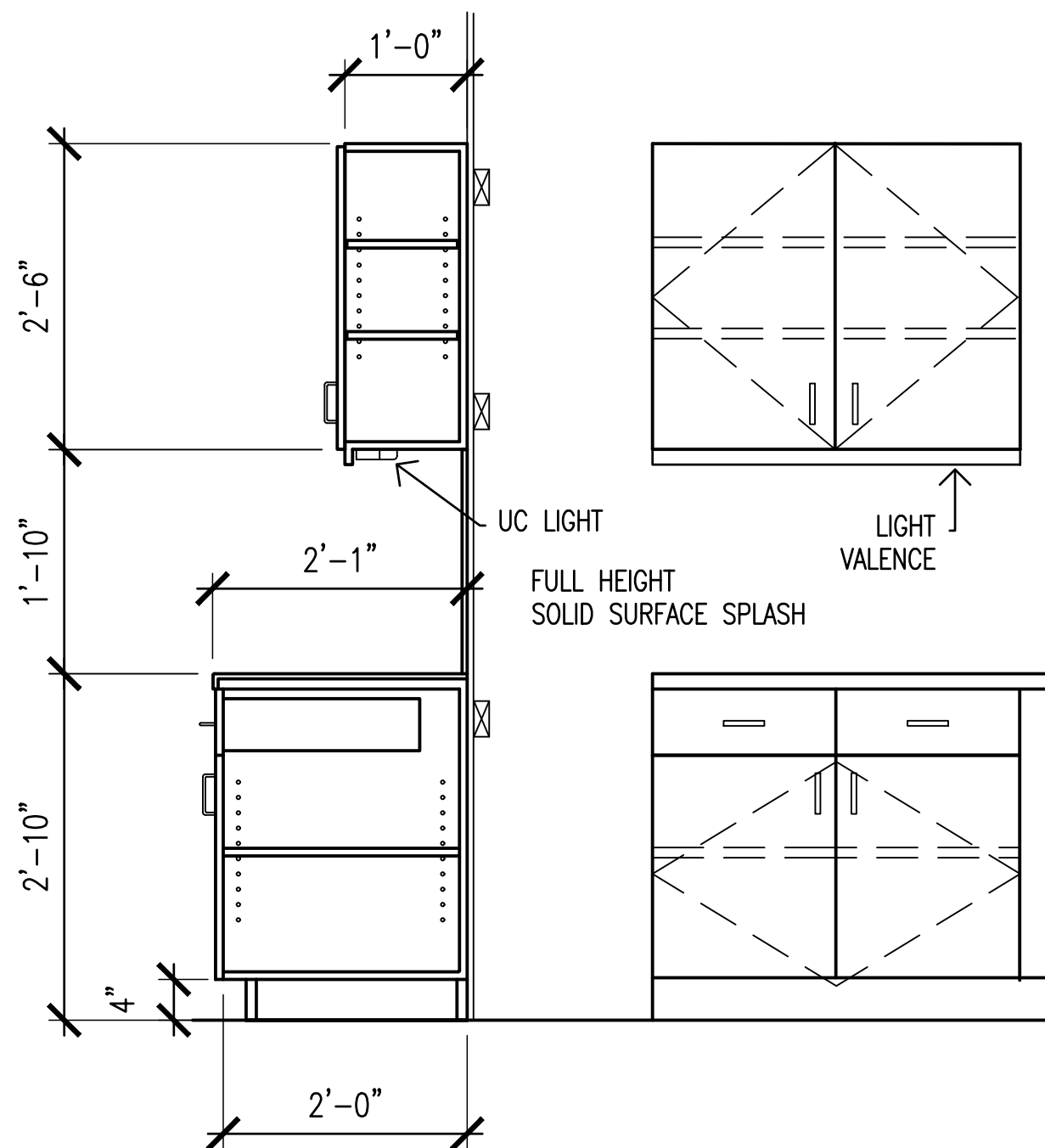
23 OF 25(A) SHEETS



NOTE MAX. ADA BASE CABINET HEIGHT IS 34". ALL UNDERCOUNTER APPLIANCES
MUST BE ADA COMPLIANT AND FIT UNDER 34" HEIGHT COUNTERTOP.



BLOCKING DETAILS
scale: 1/2" = 1'-0"



CASEWORK DETAILS
scale: 3/4" = 1'-0"

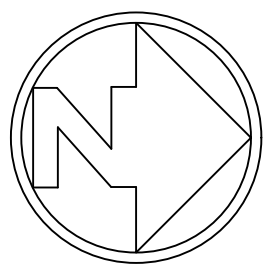
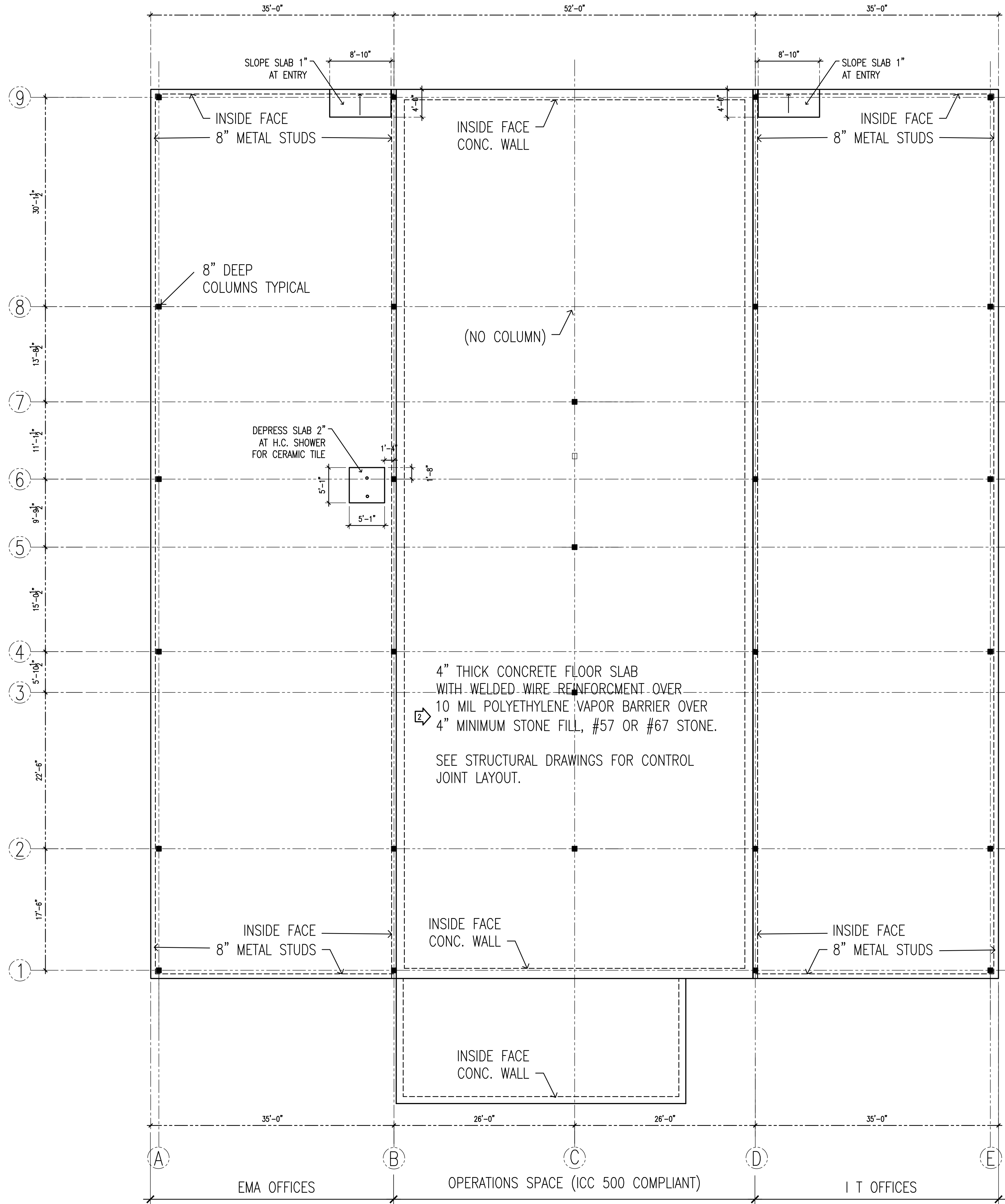
- 2 CABINETRY PLASTIC LAMINATE:
WILSONART 7993-38 "FLORENCE WALNUT"
- 2 SOLID SURFACE SS-1:
DURASEIN DM5013 "NATURALLY"
- STANDARD WHITE MELAMINE INTERIOR FINISH

COUNTERTOPS AND BACKSPLASH: SOLID SURFACING
CABINETS, OUTSIDE FINISHES: HIGH PRESSURE PLASTIC LAMINATE
CABINET SHELVES: HIGH PRESSURE PLASTIC LAMINATE
CABINETS, INTERIOR FINISH: MELAMINE
WIRE DOOR AND DRAWER PULLS: 4" BRUSHED CHROME

CASEWORK DETAILS
scale: 1/2" = 1'-0"

scale is accurate on 24"x36" sheets only

C:\Users\steve\OneDrive\Desktop\CURRENT PROJECTS\SHELBY COUNTY EMA-IT\SHELBY COUNTY EMA-IT REVERSED PLAN.dwg, 11/20/2025 6:49:03 PM



FLOOR SLAB PLAN
scale: 1/8" = 1'-0"
scale is accurate on 24"x36" sheets only

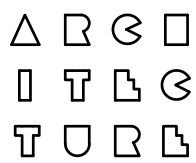
REVISIONS	BY
12	11-21-2025 SJC

DRAWINGS COPYRIGHT © 2025
ALL RIGHTS RESERVED
Stephen Coker Architect LLC



Not Valid for Construction
without Registration Seal

Shelby County
EMA - IT FACILITY
260 - McDow Road
Shelby County, Alabama 35051



Stephen
Coker
Architect
LLC

1000 Glen View Road
Birmingham, Alabama 35222

Phone 205/595-0021

E-mail:
steve@cokerarch.com

DRAWING DATE	10-27-2025
DRAWN BY	SJC
PROJECT NO.	250407

FLOOR SLAB PLAN

SHEET NO.
A20